

Better Homes and Gardens Special Interest Publications.

Our 50th Year 1965–2015

KITCHEN + BATH IDEAS

Before & After

Makeovers You Have
To See to Believe!

**30 Most
Innovative
Products**

p. 51

**Small-Space Solutions
(That Really Work)**

p. 38

What to Know Before Hiring a Pro

p. 36



Where morning always comes way too soon.

Where big, thirsty towels await.

Where daily smile maintenance occurs. (Well, maybe not daily.)



A Window into a Trendsetter's Style Picks

If you want to know the trends the world's most fabulous homes will be featuring, look no further than **Budget Blinds®**.



Tracy Christman

As design expert and Vice President of Vendor Alliance at **Budget Blinds**, the world's largest window coverings franchise, Tracy travels the world, working with the best manufacturers to identify the hottest colors, styles, and fashion-forward trends in home décor. For even more of Tracy's style forecasts and ideas about how to bring your home to life with splashes of color and beautiful design, go to blog.budgetblinds.com.



• ORGANIC LIVING

A clutter-free approach combining form and function for a natural, easy-living vibe with clean lines inviting you to kick off your shoes and stay awhile.



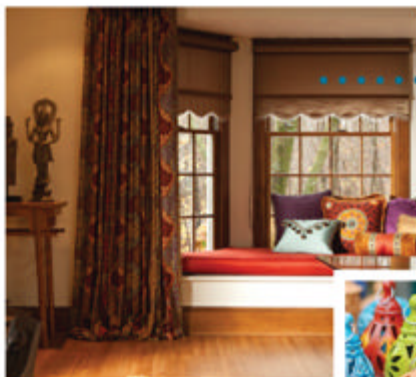
• TRANSITIONAL CLASSIC

Inspired by the past, but incorporating stylish details. New materials, new color combinations, and new ways of blending old and new design elements.



• CULTURAL ECLECTIC

Brightly colored textiles and visually interesting shapes in decorative accessories evoke a sense of global influence.



**Budget
Blinds**


Your Most Stylish Year Sweepstakes

ENTER FOR A CHANCE TO WIN A **\$5,000 WINDOW MAKEOVER**

WITH BUDGET BLINDS' SIGNATURE SERIES® WINDOW COVERINGS* AT BHG.COM/STYLISHYEAR

*Retail value. Some restrictions may apply. Ask for details. Each franchise independently owned and operated. ©2015 Budget Blinds, Inc. Budget Blinds is a registered trademark of Budget Blinds, Inc. and a Home Franchise Concepts brand.

SWEEPSTAKES RULES: NO PURCHASE NECESSARY. A PURCHASE WILL NOT INCREASE YOUR CHANCES OF WINNING. LEGAL RESIDENTS OF THE 50 UNITED STATES (D.C.) 18 YEARS AND OLDER. VOID WHERE PROHIBITED. Sweepstakes ends 6/24/15. For Official Rules, prize description and odds disclosure, visit bhg.com/stylisyear. Sponsor: Meredith Corporation, 1716 Locust St., Des Moines, Iowa 50309.



1,000s of looks. 100s of colors. 25 brands.
1 stylish you.

Over 1000 Style Consultants just a call or click away.

800 780 5191 // BudgetBlinds.com

In Home Consultation. Expert Measuring. Professional Installation. The Strongest Warranty.

Budget
Blinds.

©2015 Budget Blinds, Inc. All Rights Reserved. Join the #1 window coverings franchise*. Own a Budget Blinds. Call 1 800 420 5374 or visit www.budgetblindsfranchise.com.
Each Franchise Independently Owned and Operated. *Entrepreneur® magazine, 1996 Present.



51 Technology can make our lives easier. Check out the cool new kitchen and bath products that we think are the most awesome and innovative.



features

KITCHENS

- 60 COLONIAL REVIVAL**
A family friendly redo brings relaxed style to a classic kitchen.
- 66 GOOD GALLEY**
Simplicity and storage drive this clean lined remodel.
- 72 BLUE CHEER**
Daring to go bold with color results in a standout island.
- 78 SIMPLY SERENE**
This earthy kitchen takes cues from its calming mountain surroundings.
- 84 FRESH APPROACH**
This updated cook's kitchen is equally chic and sensible.

- 90 PERFECT FIT**
Texture and floor plan tweaks freshen this all white kitchen.
- 96 LAYOUT LESSONS**
Discover how a smart kitchen layout can boost function, flow, and flair.
- 102 SWEDE SPOT**
Scandinavian style influenced this light and bright kitchen.
- 108 ITALIAN ROMANCE**
Living abroad inspired this kitchen's old world flavor.
- 114 CROWD PLEASER**
An entertaining ready kitchen is a favorite gathering spot.

BATHS

- 120 DRAMATIC ARTS**
Old Hollywood glamour plays a starring role in this bath retreat.
- 124 MATERIALS MATTER**
This bath's pattern and finish pairings offer design lessons.
- 130 NATURALLY SPEAKING**
Color and concrete bring contemporary verve to this bath.
- 134 DESERT OASIS**
A luxe master bath belies this home's rustic exterior.

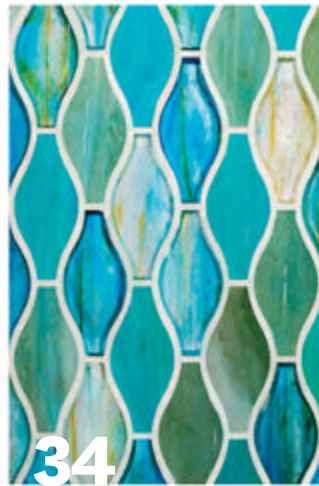
ON THE COVER

Colonial charm, lots of light, and an efficient island transform this kitchen into the hub of the home. See [page 60](#). Photographer: Kip Dawkins

25



30



34



124

departments

8 BHG.COM

Check out our best online resources for refreshing your kitchen and bath.

11 WHAT'S NEW

These products show off the sophisticated side of pastels.

14 ALL ABOUT

Take the guesswork out of countertop selection with these planning pointers.

20 QUICK PICKS

Our favorite finds for toasters will make breakfast easier.

21 10 THINGS TO LOVE

Tuscan style abounds in this spacious yet cozy kitchen.

25 BUYING GUIDE

Soak up luxury with a freestanding tub that suits your style.

30 IDEA GALLERY

These clever laundry room designs will take a load off on wash day.

32 CONNECTIONS

Share your successes and questions with us.

34 GET THIS LOOK

Capture the color and character of coastal style.

36 FROM THE PROS

Enjoy working with your remodeling pro here's how.

38 SMALL BATH

Floor to ceiling tile adds polish to this pretty bath.

40 SMALL KITCHEN

Tearing down walls reveals a sleek, storage packed kitchen.

44 1 BATH, 2 BUDGETS

A designer remakes the same space at two price levels.

51 30 MOST INNOVATIVE PRODUCTS

Find out which new, can't miss kitchen and bath products are 2015 award winners.

138 RESOURCES

Directory of professionals and products.

editor's note



We're celebrating our 50th anniversary!

Kitchen Ideas® hit newsstands in 1965, and we're celebrating all year long with fun features and flashbacks, starting with our retrospective on [page 51](#).



Innovation matters.

If it weren't for innovation, we might still be washing all our dishes by hand and lugging kettles of hot water to fill up our tubs. I wouldn't have the luxury of my rain style showerhead or the convenience of my toaster oven. (It's perfect for just about anything—trust me!)

Innovation is exhilarating and fascinating, and it's one of the million reasons why I love *Kitchen + Bath Ideas* because we've never stopped talking about innovation. For 50 years, we've been scouring the kitchen and bath industry for the best new design ideas and products to share with our readers. And since the launch of our annual 30 Most Innovative Products feature four years ago, we have seen an explosion of innovation across all categories, from appliances to surfaces and everything in between. Technology is accelerating the rate of change and making smart solutions more accessible and affordable than ever before.



As we celebrate our 50th anniversary, we look back at the decades of innovation that have brought us a wealth of ingenious products (microwave ovens!) and enduring design ideas (the work triangle!). And we look forward to the products that are primed to take us into the next decade and beyond. This year's 30 Most Innovative Products ([page 51](#)) offer a glimpse into the future, where intuitive appliances, durable materials, and customizable solutions reign. Homes are getting smarter and expectations higher. And we can't wait to see what's coming next.

This issue, we are also sharing some of our favorite before and after projects, which illustrate the enormous changes in kitchen and bath design through the years. Those stylish spaces from decades ago are hopelessly impractical for today's needs—just check out the Before photos sprinkled throughout the issue. I wonder what our needs will be 50 years from now. One thing's for certain: This innovative industry will be on pace to meet them.

Samantha

Samantha Hart
Editor, *Kitchen + Bath Ideas*®



The Life of the Kitchen



IF YOU KNOW A TRUFFLE GUY IN FRANCE, YOU'RE A DACOR CHEF.

Dacor is built for the world's most demanding chefs. And you, mon petit chou, are exactly the breed of culinary enthusiast Dacor appliances are designed to please. For three generations, we've worked tirelessly to equip the passionate chef with precise, undeniably gorgeous cooking appliances.



Complete your dream kitchen with a free Dacor Dishwasher, Ventilation System or Instant Savings with our It's Your Choice offer, for a limited time.

Learn more at www.dacor.com/ItsYourChoice



Tested and recommended by the Master Chefs of Le Cordon Bleu.®

dacor.com



In the Details

Look online to find ideas for making your kitchen and bath wow-worthy.



craft the ultimate kitchen

Whether it's creating a dedicated workstation or topping cabinetry with crown molding, these 25 ideas will help you take your kitchen's function and style to the next level. BHG.com/UltimateKitchen

eye-catching backsplashes

Changing your backsplash can make a big impact in the kitchen. Watch this video for of-the-moment design ideas.

BHG.com/BacksplashVideo

easy appliance shopping

If you're in the market for new kitchen or laundry appliances, take this quiz before shopping. It'll help you make a smart purchase by determining which features you should seek based on your lifestyle.

BHG.com/ApplianceFinder



mood-setting color

Whether you're seeking an earthy bathroom or a happy dining room, this color tool will help you find the right scene-setting hues for each room.

BHG.com/ColorAndMood



best bathroom upgrades

A small investment in your master bath can go a long way toward boosting its value—not to mention making it a space you'll want to spend lots of time in. Learn which updates are worth the splurge.

BHG.com/Upgrades

Group Editorial Leader DOUG KOUMA

Executive Editor, Food
JAN MILLER

Deputy Content Director, Home Design
KARMAN HOTCHKISS

Senior Design Director
GENE RAUCH

Assistant Managing Editor
JENNIFER SPEER RAMUNDT

KITCHEN + BATH IDEAS

Editor Samantha Hart
Senior Associate Editor Katie Rynard
Senior Associate Art Director Rebecca Lau Ekstrand
Assistant Art Director Lori Sturdivant
Contributing Designer Kate Malo
Contributing Copy Editor Paul Soucy
Contributing Proofreader Carrie Schmitz
Design Apprentice Allison Clem
Story Assistant Emily Hecker
Administrative Assistant Sue Miller

HOME DESIGN

Group Editor Samantha Hart
Senior Editors Ann Blevins, Rachel Haugo,
Bethany Kohoutek, Brian Kramer,
Samantha S. Thorpe, Jennifer Wilson
Senior Associate Editors Maria V. Charbonneaux, Katie Rynard
Associate Editors Laura Johnson, Kristina McGuirk
Staff Writer Lindsay Susla

FOOD

Senior Editors Carlos Acevedo, Jessica Saari Christensen
Associate Editors Lisa Appleton, Carrie Boyd
Better Homes and Gardens® Test Kitchen Director Lynn Blanchard

HEALTH

Senior Editor Martha Miller Johnson
Senior Associate Editor Jessie Shafer, RD

GARDENING

Group Editor James A. Baggett
Assistant Editor Risa Quade
Better Homes and Gardens Test Garden® Manager Sandra Gerdes

ART

Senior Associate Art Directors Michelle Bilyeu, Nick Crow,
Rebecca Lau Ekstrand, Stephanie Hunter,
Kimberly Morgan Metz
Associate Art Director Nicole Dean Teut
Assistant Art Directors Christy Brokens, Jessica Cremers,
Emily Phipps, Rachel Kennedy, Nikki Sanders,
Ananda Spadt, Lori Sturdivant

EDITORIAL ADMINISTRATION

Senior Copy Editors Sheila Mauck, Metta Cederdahl West
Associate Copy Editors Joleen First Ross, Megan Stein
Editorial Operations Manager Cindy Slobaszewski
Contracts and Database Manager MaryAnn Norton
Lead Business Office Assistant Gabrielle Renslow
Business Office Assistants Kim O'Brien-Wolett, Lori Swalla
Administrative Assistants Sue Miller, Shannon Clark, Lori Eggers,
Katie Swensen, Marlene Todd
Director, Premedia Services Amy Tinch-Durik
Quality/Technical Director Dave Wolvek
Director, Meredith Photo Studios Bob Furstenau
Photo Studio Set Construction Manager Dave DeCarlo
Photo Studio Business Manager Terri Charter
Prepress Desktop Specialist Trena Rickels
Color Quality Analyst Tony Hunt

EDITORIAL LEADERS

Brand Leader and Executive Vice President Gayle Goodson Butler
Creative Director Michael D. Belknap
Content Director, Home Design Jill Waage
Content Director, Food Jennifer Dorland Darling

CONTRIBUTING FIELD EDITORS

Atlanta Lisa Mowry Baltimore Eileen Deymier Birmingham, AL Cathy Still McGowin
Charleston, SC/Savannah Sandra L. Mohlmann Charlotte/San Diego Andrea Caughey
Chicago Megan Chaffin, Chandra Hammond, Elaine Markoutsas Dallas/Fort Worth Donna Talley
Denver Mindy Pantiel, Elaine St. Louis Detroit/Toronto Khristi S. Zimmeth Jaffrey Center, NH Stacy Kunstel
Los Angeles Darra Baker, Laura Hull, Robin Tucker Minneapolis/St. Paul Bonnie Broten, Heidi Pearson, Alecia Stevens
Nashville Anna Forkum New Orleans Kimberly Clarke, Margaret Zainey Roux Newport, RI Lynda Sutton
New York City Jorge S. Arango New Patz, NY Anna Molvik Portland, ME Susan Salomon Portland, OR Shannon Quimby
San Francisco Sarah Alba Seattle Linda Humphrey Washington, DC Jeanne Blackburn
Chatham, MA Karin Lidbeck-Brent

For editorial questions, e-mail kitchenbath@meredith.com or write us at *Kitchen + Bath Ideas*,
Special Interest Publications, Meredith Corp., 1716 Locust St., Des Moines, IA 50309-3023.

For reuse and reprint requests, contact CLpermissions@meredith.com.

PROMOTION

Home Idea Center

24/7 INFORMATION & INSPIRATION

Your one-stop resource to home design
brands and ideas guaranteed to inspire
and improve every room in your home.



Dacor

Dacor is a manufacturer of ultra-premium kitchen appliances, founded in 1965. Designed and built in California, Dacor's cooking appliances integrate function and technology to create high-performing, intuitive products that reflect the lifestyle and needs of passionate home chefs and kitchen designers. Dacor, the life of the kitchen.

www.dacor.com



BHG.com

BHG.com is focused on decorating, building and remodeling, crafts, entertaining, cooking, and gardening. In addition to providing useful tools and advice, BHG.com's trusted experts keep visitors up to the minute with information on the latest developments and trends around home and garden. It has easy-to-use interactive tools, clear visuals, step-by-step instructions, and money-saving suggestions. It makes life easier and more enjoyable. Visit BHG.com today!

ADVERTISEMENT

SHOP NOW AT
bhg.com/shop

See our editors'
top product picks!

With so many fresh home
furnishings, you'll find
something for every room
in your house!

LOVE IT? GET IT!



INTRODUCING THE NEW

LOVE IT GET IT
shop Better
Homes
and Gardens

ADVERTISING

Associate Publisher, Marketing STACY SHAPIRO FELDMAN stacyshapiro.feldman@meredith.com

NEW YORK ADVERTISING SALES

805 Third Ave., New York, NY 10022; 212/455-1349; Fax: 212/551-7192
Account Manager MARIA PRUYN maria.pruyn@meredith.com

CHICAGO ADVERTISING SALES

333 N. Michigan Ave., Chicago, IL 60601; 312/580-1615; Fax: 312/580-7909
Account Manager KRISTEN BOWERS kristen.bowers@meredith.com
Account Manager LISA MORTON lisa.morton@meredith.com
Sales Assistant NANCY ECHEVERRIA nancy.echeverria@meredith.com

SOUTHEAST ADVERTISING SALES

Navigate Media, 1875 Old Alabama Rd., Suite 1320, Roswell, GA 30076;
678/507-0110; Fax: 678/507-0118
Account Executive GARY D. DENNIS gary@navigate-media.com

WEST COAST ADVERTISING SALES

1990 S. Bundy Dr., Suite 500, Los Angeles, CA 90025;
310/689-1627; Fax: 310/479-2692
Account Manager BIANCA HALEY bianca.haley@meredith.com
Sales Assistant BLAIR SHALES blair.shales@meredith.com

ADVERTISING OPERATIONS

1716 Locust St., Des Moines, IA 50309-3023
Senior Production Manager APRIL BRACELIN
Advertising Operations Manager LIBBY EHMIKE Production Director KENT POLLPETER
Product Manager DEBBIE REYNOLDS Consumer Marketing Director LIZ BREDESON
Consumer Marketing Managers MARINA MCGREGOR, BLAINE ROURICK

MARKETING SERVICES

212/455-1349; Fax: 212/551-7192
Senior Integrated Marketing Manager KATHLEEN KEANE kathleen.keane@meredith.com
Associate Integrated Marketing Manager PATRICIA REVERAND patricia.reverand@meredith.com
Promotion Art Director LORI CHRISTIANSEN lori.christiansen@meredith.com

DIRECT MEDIA

Fax: 212/499-6757
Advertising Director GRACE CHUNG-MUI grace.chung-mui@meredith.com 212/499-6719
Business Development Manager STEPHANIE BARREZUETA stephanie.barrezueta@meredith.com 212/499-6723
Business Development Manager CARA JACOBS cara.jacobs@meredith.com 212/499-6770

CRAFTS GROUP ADVERTISING SALES

Vice President and Publisher, Crafts Group TOM DAVIS
Advertising Sales Director AMY GATES amy.gates@meredith.com
Advertising Account Executive AMBER DARBY amber.darby@meredith.com
Project Supervisor BETHANY PETERSON bethany.peterson@meredith.com
Sales Assistant ASHLEY MCGRAW ashley.mcgraw@meredith.com

NEWSSTAND

Retail Brand Managers

Home, Garden, and Holiday DAWN WHITAKER Health and Food JENNIFER HAMILTON

FINANCIAL ADMINISTRATION

Business Director JANICE CROAT Associate Advertising Business Manager EDWARD HAYES
Business Manager JENNA HETCKO Product Sales HEATHER PROCTOR

Meredith National Media Group

President | TOM HARTY

EXECUTIVE VICE PRESIDENTS

President, Media Sales | RICHARD PORTER
President, Parents Network | CAREY WITMER
President, Women's Lifestyle | THOMAS WITSCHI
President, Meredith Digital | JON WERTHER
Meredith Home Group | JAMES CARR
Creative Content Leader | GAYLE GOODSON BUTLER
Chief Marketing Officer | NANCY WEBER
Chief Revenue Officer | MICHAEL BROWNSTEIN
General Manager | DOUG OLSON

SENIOR VICE PRESIDENTS

Chief Digital Officer | ANDY WILSON
Digital Sales | CAROLYN BEKKEDAH
Research Solutions | BRITTA CLEVELAND

VICE PRESIDENTS

Business Planning and Analysis | ROB SILVERSTONE
Consumer Marketing | JANET DONNELLY
Corporate Marketing | STEPHANIE CONNOLLY
Corporate Sales | BRIAN KIGHTLINGER
Digital Video | LAURA ROWLEY
Direct Media | PATTI FOLLO
Brand Licensing | ELISE CONTARSY
Communications | PATRICK TAYLOR
Human Resources | DINA NATHANSON
Strategic Sourcing, Newsstand, Production | CHUCK HOWELL



Chairman and Chief Executive Officer | Stephen M. Lacy
President, Meredith Local Media Group | Paul Karpowicz

Vice Chairman | Mell Meredith Frazier
In Memoriam | E. T. Meredith III, 1933-2003



The Association of Magazine Media



Perfectly Pastel

Pale hues are back in a big way—and for good reason. Today's pastel offerings have a more chic side.

writer KATIE RYNARD

what's new



1 2



3



4 5



1. RETRO CHIC With its '50s flair and sleek metallic accents, this 10 speed mixer draws style inspiration from both past and present. **Stand Mixer in Pastel Blue, \$450, Smeg, smegusa.com.** **2. NATURE INSPIRED** Sage green cabinetry sets a soothing, earthy tone in a kitchen or bath. **Kent 3 inch cabinetry door with Green Tea Finish on Maple, Plain & Fancy Custom Cabinetry, plainfancycabinetry.com.** **3. ROSY DISPOSITION** Graduating from everyday white dinnerware is easy with this hand glazed porcelain set featuring simple silhouettes and a whispery pink finish. **Hue Dinnerware in Blush, starting at \$5 per piece, Crate and Barrel, crateandbarrel.com.** **4. BOTANIC BEAUTIES** These organic cotton towels get their pretty pigments from chamomile, larkspur, and olive leaves. **Kusaki Puff Towels in Yellow, Blue, and Tan, starting at \$19, VivaTerra, vivaterra.com.** **5. CLEAN MACHINE** Dish duty becomes more enjoyable with a cheery dishwasher. Bonus: It holds 14 place settings. **Retro Dishwasher in Butterscup Yellow, starting at \$1,695, Big Chill, bigchill.com.**



6 7



“Pastels are all grown up. Today’s versions mix in gray tones for a sophisticated feel that’s still fun.”

Samantha Thorpe
editor, *Color Made Easy*



8 9

10



6. FINISHING TOUCH Handmade glass hardware brings a just right pop of color and sparkle to cabinetry. **Knobs and Pulls in Reflective Purple**, starting at \$18, Sietto, sietto.com. **7. CRISP CONTRAST** Energize your kitchen with a rug featuring an on trend color pairing: pastels and brights. **Dhurrie Rug in Lime, Aqua, Cream**, starting at \$45, Shades of Light, shadesoflight.com. **8. MELLOW YELLOW** A light crackle finish and a subtle sun-kissed hue let this tile shine in kitchens and baths of all sizes. **3x6 field tile in Chardonnay**, \$30 per square foot, Fireclay Tile, fireclaytile.com. **9. EYE CANDY** This chair’s openwork design and cheeky hue give your dining room an instant style refresh. **Wayfarer Arm Chair in Morning Sky**, \$1,338 for two, Coastal Living by Stanley Furniture, wayfair.com. **10. CLASSIC ELEGANCE** A shapely blue-green vanity with a marble top makes a striking statement in a small bathroom. **Savoy Bath Vanity in Antique Aquamarine**, \$559, Home Decorators Collection, homedecorators.com.

Choosing Countertops

Pick the perfect countertop—and keep it in tip-top shape—with these 25 tips.

writer MEGAN BOETTCHER

1 right height

The standard height for countertops is 36 inches. A comfort-height countertop is 1 to 3 inches higher or lower, depending on your personal preference.

2 going granite

Granite is one of the most popular materials because it comes in a wide range of colors, styles, and price points. Compare samples from at least three different suppliers to make sure you get the best quality you can afford.

3 classic style

Marble, *below*, imparts a timeless feel—and no two slabs are the same. To protect this beautiful-but-porous stone, wipe up spills quickly.



4 worry-free

Quartz-surfacing, *above*, offers the look of natural stone without the maintenance. Crushed stone is mixed with resin to create this hardworking countertop.

5 budget-friendly pick

Laminate is the most affordable countertop material and can be installed as a DIY project. You'll find it in a wide range of colors and patterns, including faux stone and wood. It's heat- and scratch-sensitive, however.

6 modern vibe

Square edges, *above*, create a contemporary look. Look closely, though, and you'll see barely-there bevels, called kerfs, that help soften the sharpness.



7 distinct design

Heavy, noticeable veining in natural stone, *below*, gives a countertop a sense of "movement."



take a seat

Since everyone gathers in the kitchen, give them a comfy seat at the counter with these knee-space guidelines:

8 A 30-inch-high countertop requires an 18-inch overhang.

9 A 36-inch-high countertop requires a 15-inch overhang.

10 A 42-inch-high countertop requires a 12-inch overhang.

11

illusion of luxury

Get the look of a thick slab of stone without the hefty price tag (or the extra weight on your cabinets!) by asking your fabricator to miter the edge of the slab to a strip of the same material, *below*.



12

well-rounded

Rounded edge profiles are safer for youngsters and more comfortable for high-traffic areas. Your hips will thank you!

13

splash zone

Extend your countertop a minimum of 9 inches behind a cooking surface on an island or peninsula.

14

thick and thin

Stone counters in the kitchen are typically 1¼ inches thick and bath vanity counters are ¾ inches thick.



15

test drive

Before you commit to a specific material, bring samples home, *above*, to see how they look with your lighting and decor.

16

remodel in stages

When planning the timeline for a remodel, remember this: New cabinetry installation comes before countertops. (Exception: Appliance garages or cabinets that sit atop your counters.)

17

baking center

Baking enthusiasts: Consider a lowered section of countertop dedicated to rolling and kneading dough. Marble's cool surface, *below*, is ideal for this.



18

dish duty

Your main sink should have at least 24 inches of counter on one side and at least 18 inches on the other, *below*.



19

cozy up

Wood countertops are appreciated for their warmth. They come in three grain options. Face grain, *opposite*, has the most movement; flat grain is the most streamlined; and end grain has a "checkered" pattern and is the most durable.

A modern kitchen featuring a large window with a view of a green landscape. The kitchen has white upper and lower cabinets, a stainless steel sink with a blue faucet, and a granite countertop. A wooden island with a thick top and a butcher block side is in the foreground, with two white bar stools. A plate of green limes sits on the island. In the background, a stove with a green pot and a vase of yellow flowers are visible.

SMART SURFACE

Top a dedicated work space with butcher block. It withstands wear and tear from slicing and dicing.

20

spread out

Enjoy a little elbow room when you prep meals by planning for at least 36 inches of continuous countertop, *below*, in your primary work area.



22

seal of approval

Sealing natural-stone counters prevents water and oils from penetrating the surface. This spray-and-wipe solution, *above*, makes it easy. Granite Gold Sealer, \$30, granitegold.com



“Be mindful of room size when mixing materials. In smaller spaces, I try to limit the number of materials.”

—Ramsin Khachi, principal, Khachi Design Group, khachi.com

24

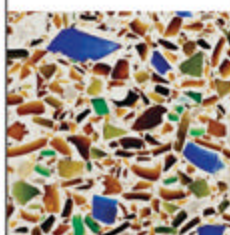
restaurant quality

Nearly indestructible stainless-steel counters, *above*, are a great option for the home chef. Pick a brushed finish over polished—it’ll show less wear.

23

go green

Counters with recycled glass, *below*, have a playful quality that is ideal for a bar or tabletop.



21

custom beauty

Elaborate edge profiles like this one, *above*, are pricey but a great detail.



25

balanced approach

If your countertop has a busy pattern, consider a simple pattern on your backsplash and floor. On the flip side, spice up a quiet countertop with an eye-catching backsplash or floor design, *opposite*.

VISUAL TRICK

Boost comfort at the vanity (read: less bending) with an extra thick counter. It subtly raises vanity height.



COUNTERTOP MATERIAL FINDER

Can't decide between materials? This quiz will help you hone in on one.
[BHG.com/CounterFinder](https://www.bhg.com/CounterFinder)

quick picks

Warm & Toasty

Enjoy just-right breads and bagels courtesy of toasters that pair smart features with sharp style.

writer KATIE RYNARD



kMix 2-Slice Toaster with warming rack in Magenta | \$100
De'Longhi
wayfair.com



Die-Cast 2-Slice Smart Toaster | \$130
Breville
brevilleusa.com



2-Slice Extruded Aluminum Long-Slot Toaster | \$100
Cuisinart
cuisinart.com



4-Slice Toaster with One-Touch Lift/Lower and Digital Display in Onyx Black | \$130
KitchenAid
kitchenaid.com



SmartToast Extra-Wide Slot Toaster | \$35
Hamilton Beach
hamiltonbeach.com



New Generation Classic 2-Slice Toaster in Lime Green | \$240
Dualit
williams-sonoma.com

10 things to love



Rustic Refined

Travels to Tuscany inspired a kitchen that radiates warmth and age-old authenticity.

writer KATIE RYNARD *photographer* JAMES SALOMON
field editor SUSAN SALOMON

1 primary colors

Earthy tones give this new kitchen a timeworn look—and cozy it up in the frigid Vermont winters. “The warm, Tuscan-inspired colors wear so well in this climate,” interior designer Denise Welch-May says.

2 weathered details

Comfortably worn materials and finishes, including terra-cotta floor tiles, reclaimed-wood ceiling beams, distressed cabinetry, and plaster walls, contribute warmth and lived-in character.

10 things to love



3 cooking hearth

Dark green tile and sun-kissed cabinetry distinguish the arched cooking alcove, *left*, as a focal point. The tile's animal motif contributes a folk-art feel—and a bit of whimsy. A two-tier niche on one side organizes cooking oils in a convenient spot; another on the opposite side holds spices.

4 under wraps

Too much stainless steel would have detracted from the kitchen's signature old-world warmth, so Welch-May tucked the largest appliance—the refrigerator—behind matching cabinetry panels, *far left*.

5 white space

The classic looks of the butler's pantry, *right*, are a distinct style departure from the kitchen. Marble counters are a smart baking surface; open shelves keeps cookbooks and serving dishes in view. Terra-cotta floors and inset-panel cabinetry maintain some cohesion.



6 message center

Stacked chalkboards, *above*, make good use of wall space between the kitchen and butler's pantry and are handy for jotting down grocery lists, menus, and notes.

This kitchen's "warm, Tuscan-inspired colors wear so well in this climate."

Denise Welch May,
interior designer

7 spacious sink

An extra-wide, extra-deep trough sink made of indigenous slate, *right*, hides dirty dishes and cookware used for large get-togethers, while the faucet's pullout spout reaches all corners. Large windows over the sink make dish duty enjoyable.



8 custom storage

"We didn't want the kitchen to have run-on cabinets," Welch-May says. So in lieu of upper cabinets, a freestanding red cupboard, *right*, serves as a food pantry, while the working side of the island supplies additional storage.



9 layers of light

Decorative fixtures—forged-iron pendants and a candle-style chandelier, *left*—define zones in the open space. The many subtle recessed lights illuminate all kitchen tasks.

10 gather together

The dining table, *left*, was purposefully placed close to the island, which provides overflow seating or serves as a buffet during family get-togethers.

Advertisement

NOW AVAILABLE!

FREE FOR YOU!

In every digital issue of Refresh™ you'll find 5-minute makeovers, real-life re-dos, color tips, professional style secrets ... simply everything you need to fall in love with your home all over again!



#140444

REFHMT1

Find out how you can try your first issue FREE!

Visit bhg.com/refreshdigital

Now with all the benefits of your hassle free automatic renewal guarantee

Bathing Beauties

Take your bathroom from basic to luxurious with a freestanding tub.

writer **ANDREA COOLEY**

FROM PURELY FUNCTIONAL TO FOCAL- point fabulous, tubs have come a long way. Freestanding tubs in particular are having a big moment, and for good reason: “They are very sexy pieces,” says Debe Robinson, a certified master kitchen and bath designer and owner of Kitchen Expressions in Sheffield, Alabama.

While a tub’s primary functions remain bathing and relaxing, the latest styles turn it into a major design element. “It’s more of an art piece when you’re not in it,” Robinson says. These days, you’ll find freestanding tubs with colorful exteriors, interesting shapes, and unexpected materials. Classic-style tubs rest on claw feet or pedestals, while contemporary versions offer simple yet striking silhouettes.

Freestanding tubs are made of a variety of materials, including stone, wood, cast iron, copper, and acrylic. (Depending on the weight of the tub, you may need to beef up your bath’s floor support.) They tend to take up less space than built-in models and therefore can make your bath appear larger, Robinson says. The price of a standalone tub may give you pause initially, Robinson says, but remember: You don’t have to pay for the surround needed for a built-in.

Finally, consider how you’ll use it. For instance, deep tubs are ideal for long soaks, while extra-long models can accommodate multiple bathers. You’ll want to make sure you can

reach the bathing supplies and the faucet while you are in the tub (plumbing can be on the wall, floor, or a deck). If you’re seeking a true spa-like experience, look for models with jets or air baths. And, of course, you’ll want to measure doorways, hallways, and stairwells to ensure your tub will fit through during installation.

To start soaking in style, turn the page for our roundup of traditional and contemporary tubs.



ABOVE: An egg-shape tub is the perfect counterpoint to this bath’s dramatic tilework. Pond Collection WQ.F4072S Tub, \$5,180, Hydrology, hydrologychicago.com.

buying guide

Traditional Thoughtful attention to detail by way of feet, finishes, and form make for extra special soaks.



1 2
3 4





5

6



7

- 1. FRESH TAKE** Relaxed, updated styling a raised headrest and subtle rim detail nod to old Victorian slipper tubs. **Drayton, \$4,500**, Victoria + Albert, vandabaths.com.
- 2. TIMELESS DESIGN** A classic white cast iron tub with a rolled rim and pedestal base will never go out of style. **Porcelain Pedestal Bathtub, \$4,999**, Pottery Barn, potterybarn.com.
- 3. MOODY BLUE** Rivets accent the bold blue exterior of this large soaking tub. Both the interior and exterior finish are applied by hand for a custom look. **The Hexham 73 inch Cast Iron French Bateau Tub Package with Hale Blue Exterior, \$5,395**, Penhaglion, penhaglion.com.
- 4. SCENE STEALER** A silvery finish and stepped pedestal base evoke old Hollywood glamour. **66 inch Selby Polished Stainless Steel Tub, starting at \$2,414**, Signature Hardware, signaturehardware.com.
- 5. FANCY FOOTWORK** Polished brass feet create eye catching contrast with a crisp white exterior. Other metallic feet finishes are available. **Vintage Imperial Clawfoot Soaking Tub with Metal Feet, \$5,749**, Restoration Hardware, restorationhardware.com.
- 6. RUSTIC WARMTH** Bring old world charm to your bath with this handmade hammered copper tub. **Bathhaus Oval Freestanding Bathtub in Old Copper, \$5,475**, Whitehaus, homedepot.com.
- 7. DEEP THOUGHT** A wood base anchors a cast iron tub that's built for relaxation with a generous depth and dual lumbar support. **Rêve with Brilliant Ash Base, \$4,780**, Kohler, us.kohler.com.

buying guide

Contemporary Sharp lines or graceful curves—sometimes both—give these tubs can't miss presence.



1 2
3 4





5



6

7



1. RIGHT ANGLES A boxy profile gives this rectangular tub a sleek, straightforward look that's ideal for minimalist bathrooms. **Andrea 11 with Sculpted Finish**, \$6,284, MTI Baths, mtibaths.com. **2. ON TREND** Fiberglass construction makes this tub much lighter than standard cast iron models. Its asymmetrical apron and bright blue exterior offer a contemporary edge. **Sax in Aqua**, \$1,500, Maax, maax.com. **3. STATEMENT MAKER** A winged rim accentuates the rounded rectangular design of this extra deep soaking tub. **LoveMe Freestanding EcoMarmor Bathtub in White**, \$3,415, Aquatica, aquaticausa.com. **4. NATURAL ZEN** The shell of a walnut inspired this tub's oblong shape. A floating shelf wraps around the tub, lending the warmth of wood. **BBE01 Shelf**, \$8,855, WetStyle, wetstyle.ca. **5. SILKY SMOOTH** A pliable resin gives this tub its stylish curves. The material is durable, stain resistant, and easy to clean. **Chelsea Silk Tub**, starting at \$5,495, Hastings Tile and Bath, hastingsstilebath.com. **6. SUPPORTING ROLE** The ergonomic outline of this volcanic limestone and resin tub is contoured to your body. Its low profile allows for easy entry. **Cabrits**, \$5,900, Victoria + Albert, vandabaths.com. **7. GRAPHIC DESIGN** This acrylic tub's high contrast color pairing packs a visual punch. **Bravo Freestanding Bath in Black/White**, \$2,450, Jacuzzi, jacuzziLuxurybath.com.

BEAUTIFUL BATHROOMS

Tour these 10 baths for inspiration to create the master bath of your dreams. BHG.com/MasterBaths

Laundry Rooms

Wash day is easier in a well-stocked space that blends plentiful storage, good looks, and a convenient layout.

writer KATIE RYNARD

A stacked washer and dryer, a utility sink, and custom cabinets transform a pass-through area into a laundry zone.



1. HANG IT UP Mounting a tension rod between an upper cabinet and a wall turns an open space into a spot to hang clothes. Wall art and a lively hue make this wash zone as fresh as it is functional. **2. LANDING SPOT** A countertop above a front loading washer and dryer creates a work surface for folding clothes. Open shelves above the appliances put laundry supplies in clear view. **3. WASH STATION** Simplify pretreating, hand washing, and other wet tasks by placing a utility sink next to the washing machine. Base cabinetry corrals products, so the countertops can be used for sorting and folding. **4. COLOR CUES** A blue washer and dryer inspired this room's playful color scheme. Narrow base cabinets with lift up tops serve as pretty and stealthy sorting stations.

Join the Conversation

Share your questions, advice, photos, and success stories with us, and we'll show you some fun finds from the home design world. You can talk to us any way you want—letters, e-mails, or Facebook posts.



Ceramic Tile Stars

Last fall, we traveled to Bologna, Italy, for Cersaie, an annual international ceramic tile expo. As we walked around the showroom floors, we were inspired by the innovation in shapes, colors, and finishes. Among the biggest trends we saw: hexagonal tile, dead ringer look alikes of wood (*below*) and stone, metallic finishes, pop art patterns, whimsical hues, and fresh mosaics with organic shapes of all sizes.



FINDING YOUR STARTING POINT

Q: I want to update my kitchen, but am overwhelmed by all the color and finish options out there. Where do I even start?

—KELLY R., VIA E-MAIL

A: “If you have a clean slate—new construction or a total remodel—start with whatever elements have the most restrictive options. Examples: Cabinets with only a few finishes may be more affordable, so determine this choice first. Or if you find a closeout on tile or a granite slab left over from another project, use these as your starting point. Paint, on the other hand, can be chosen last, as thousands of color options exist. If you’re not starting from scratch, you have to start with what you are given! As elementary as this may sound, we often see clients too overwhelmed to recognize their basic starting point.”

—Max Isley, owner and designer, Hampton Kitchens, Raleigh

Brain Power in the Shower

Water isn't the only thing flowing in the shower—creativity is, too, according to a survey commissioned by Hansgrohe. Some of our best ideas and solutions come to us as we rinse and repeat because of the calming change of scenery. The study also revealed these connections between showering and bright ideas:

40%

See showering
as useful for
fresh thinking

72%

Experienced
new ideas in
the shower

14%

Hop in the
shower just to get
creative juices
flowing



SPRING CLEANING MADE EASIER

Scrubbing kitchen and bath floors is dirty work, so we're excited about the Brillo Sweep & Mop. The 360-degree rotating tool comes with dry pads for sweeping, wet pads for a quick clean, and an antibacterial sponge pad that deep cleans—no need to get down on hands and knees. \$20, brillo.com.



Color of the Year

Uncork your earthy side in 2015—Marsala is Pantone's Color of the Year! The rich, wine-inspired hue lends itself well to small appliances and other accent pieces in kitchens and baths. It partners well with warm neutrals and golden yellows, but is especially dramatic when teamed with teal or turquoise.

Falling in Love with SOAPSTONE Timeless, Classic and Impervious



M. Teixeira Soapstone Celebrating 15 Years in Business

Denver • San Francisco • New Jersey

Washington DC (Spring 2015)

We Ship Nationwide • Toll Free 877-478-8170

www.soapstones.com • www.soapstone-woodstove.com

get this look



CALMING EFFECT

White perimeter cabinets let the kitchen's ocean-inspired tones stand out while providing visual relief.

Coastal Character

Bold sea-glass hues and metallic accents energize this beachy kitchen. Achieve a similar look with these products.

writer KATIE RYNARD



FAUCETS

Talis S 2-Spray SemiArc Pull-Down Kitchen Faucet in Chrome | starting at \$478
Hansgrohe,
hansgrohe-usa.com

PENDANTS

St. Croix Clear Pendant | \$265
Jamie Young,
jamieryoung.com



ISLAND PAINT

Seaside Resort | starting at \$37 per gallon
Benjamin Moore,
benjaminmoore.com



REFRIGERATOR

Architect Series II 20-cubic-foot Counter-Depth French Door Refrigerator | \$2,399
KitchenAid, kitchenaid.com



BACKSPLASH TILE

Silhouette Mosaic XCM212 | \$29 per square foot
Hirsch Glass,
hirschglasscorp.com



STOOLS

Miller-C Counter Stool | \$261
Euro Style,
gotoeurostyle.com



“I think almost any color is good for a kitchen if all the design elements play together well.”

Cheryl Kees Clendenon
kitchen designer

from the pros

HOW TO BE A BETTER REMODELING PARTNER

Finding a design pro
you trust is key.
So is speaking up.
Start with these
10 strategies.

writer LINDA EGGERS

“Getting the most from a designer begins when the client has thought through their objectives for the project. You don’t have to have solutions in mind, but it’s important to have a sense of what you envision.”

—NICK GERAGI,
GENERAL MANAGER,
KLAFF’S KITCHENS,
SOUTH NORWALK, CT

“Faith is a must. Have faith that your professional will design the room that best suits your needs, not their portfolio.”

—KAREN WILLIAMS, PRINCIPAL AND ARCHITECTURAL DESIGNER, ST. CHARLES OF NEW YORK, NEW YORK CITY

“A PICTURE IS INDEED WORTH 1,000 WORDS. COLLECTING IMAGES THAT REFLECT YOUR PERSONAL STYLE OR PREFERENCE CAN BE HELPFUL. WITH SITES LIKE HOUZZ AND PINTEREST, IT’S EASY TO ORGANIZE YOUR IDEAS AND SHARE THOSE IMAGES WITH YOUR ARCHITECT/DESIGNER.”

—MICHAEL WARD, ARCHITECT, ALLARD WARD ARCHITECTS, NASHVILLE

“Ask the designer to solve certain challenges or meet a list of objectives before explaining how you see the kitchen laid out. Most of our clients have good ideas, but a professional has the advantage of not living in the paradigm of the problem—and can add more value by introducing a unique perspective.”

—RAYMOND J. WIESE, FOUNDER AND DESIGNER,
THE WIESE COMPANY, INC., SHERBORN, MA

“IF YOU START DREADING MEETINGS IN THE MIDST OF A PROJECT, YOU MAY BE INCOMPATIBLE. BE HONEST AND MOVE ON. IN THE END, YOU’LL BOTH SAVE TIME AND MONEY.”

—JENNY GILBREATH,
PRINCIPAL, JG INTERIORS, OMAHA

“Be open-minded and ready to embrace unusual ideas and concepts. Don’t be afraid to say what’s on your mind—politely—remembering that this is your space, and your mortgage will pay for it. Stay away from designers who want their kitchen in your home. Sometimes even the finest designers need to scrap some ideas and create new concepts for you.”

—DUVAL ACKER, OWNER AND DESIGNER,
KITCHENS BY DESIGN, INC., MOUNT PLEASANT, SC

“Ask for references for projects that went great and not so great. That way you find out how a pro handled a tough situation, in case one arises.”

—RUTH ANN TAYLOR LONG, OWNER
AND PRINCIPAL DESIGNER, TAYLORED SPACES, RALEIGH

“Don’t be scared to ask lots of questions. Sometimes designers use jargon that may not be familiar to you. If you don’t understand something, ask what it means. It’s better to ask and not be sorry later—you’ll be living in your space every day, so be sure you are confident with every decision.”

—JANE LOCKHART,
PRINCIPAL AND
PRESIDENT, JANE
LOCKHART INTERIOR
DESIGN, TORONTO

“If you’re thinking of getting a professional’s help, do so as early in the process as possible. It is easier (read: more affordable) to guide a project than to rescue it!”

—ABIGAIL REAMES,
DESIGNER, KITCHENS BY
DESIGN AND KBD HOME,
INDIANAPOLIS

“A comprehensive consultation will help you determine if you’re in the right place with the right product and the right person. If not, move on to the next pro.”

—MARIA STAPPERFENNE,
MANAGER, TEWKSBURY KITCHENS
AND BATHS, WHITEHOUSE STATION, NJ

small bath



TUCKED AWAY

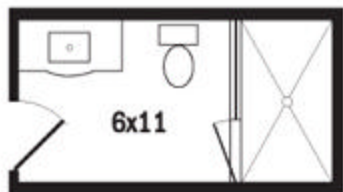
A niche strategically placed in the half-wall keeps shampoo-bottle clutter off the ledge, so it doesn't detract from the shower's distinctive tilework.



Mix and Match

Fun and sophisticated may seem like mutually exclusive terms, but they bring fresh style to this petite bath.

writer **KEN WYSOCKY**
 photographer **BRIE WILLIAMS**
 field editor **SANDRA L. MOHLMANN**



Tile Style The owners of this Sullivan's Island, South Carolina, home wanted a chic yet whimsical look for their college age daughter's bath. Interior designer Theresa Bishopp chose a neutral color palette punctuated by tonal hexagonal tiles that cover the room and reflect light—a bonus in the windowless space.

Opposites Attract To avoid a contrived look, Bishopp mixed polished nickel faucets, *above left*, with antique brass finish light fixtures and cabinet hardware. "Hardware should complement the space, not own it," she says.

Great Wall The shower's half wall, *opposite*, offers some privacy, yet still allows light into the stall. A glass panel atop the wall makes the room feel airier—and showcases tilework that a full wall would cover.

Round Off The gentle curve in the custom furniture style vanity, *opposite*, reduces its mass and makes the room feel more spacious. So does the vanity's bracket feet, creamy base, and Crema Marfil marble countertop. Above, the oval mirror and wall sconces echo the vanity's curve and help soften the room's angular lines.



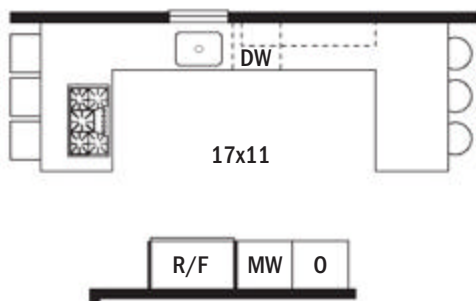
small kitchen



Opening Act

Out go the walls in this kitchen, and in comes a chic, streamlined design that caters to a couple or a crowd.

writer and field editor **LISA MOWRY**
photographer **CHRISTINA WEDGE**



Knock Out Confining walls stood between Atlanta homeowners Scott and Sheryl Lasky and the great-room they desired, so interior designer Beverly Baribault took them down. In the new layout, *opposite*, twin peninsulas form a U-shape. “Because we have seating on both ends, we’re never far from our guests,” Sheryl says. “And the two counters mean that we can both work in the kitchen and not get in each other’s way.”

No Show The granite counter’s leathered finish, *above left*, hides fingerprints and smudges.

Statement Lighting

Black sphere-shape pendants, *top right*, add artistic interest, thanks to their sculptural form. The pendants are hung high enough so as not to be in the way, but low enough to provide smart illumination.

Two Tone Black and gray cabinetry, plus tile and a countertop in similar hues, *above right*, make the centrally located kitchen pleasing to the eye. “Using tonal colors and varying the textures throughout help guide your eyes around the room rather than at just one thing that sticks out,” Sheryl says.



small kitchen



Layered Textures Mixing materials and finishes, *left*—a honed countertop and backsplash, sleek stainless-steel appliances, and painted and glazed cabinetry with visible brushstrokes—lends visual and tactile interest.

Clever Add-Ons An angled drawer insert, *below left*, makes it easy to find the right spice quickly. The drawer is strategically located close to the cooktop.

Now You See It The cooktop's downdraft vent, *below middle*, reports for duty with the push of a button, but disappears under the countertop when not in use for a sleek, space-saving look.

Thoughtful Storage “We wanted to be able to organize everything in the kitchen so that we don’t have to reach for things or dig in a cabinet,” Sheryl says. Baribault’s solution: roomy base drawers, *below right*, that put contents in clear view, so nothing gets lost in the back. “We keep all the cooking items right by the ovens, so you don’t have to move away from where you are cooking,” Sheryl says.

Wonder Wall A function-packed run of cabinetry, *opposite*, holds stacked wall ovens, the refrigerator, the microwave, and drawers. Placing many of the kitchen’s major players on this wall helps streamline the open layout for better balance.

“Using tonal colors and varying the textures throughout help guide your eyes around the room rather than at just one thing that sticks out.” —Sheryl Lasky, homeowner





WARM WOOD

Carrying the same flooring between rooms in an open plan establishes unity. Hardwood is a smart choice because it's equally durable and charming.

1 bath, 2 budgets



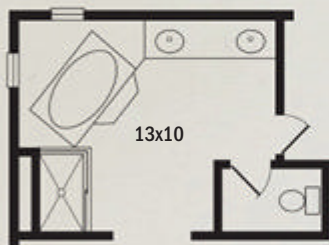
Classic with A Twist

A fresh take on cottage style brings cozy comfort to an outdated bath.

writer **KATIE RYNARD**
photographer **MARTY BALDWIN**
illustrator **ANN WEISS**

THE PROBLEMS

1. Brass fixtures, a builder-grade vanity, and an overly sweet pink-and-white palette dated the bath.
2. An enormous corner whirlpool tub took up too much floor space at the expense of the small shower.
3. Getting ready at the uncomfortably low vanity required lots of bending.
4. The vanity's overhead lights, located in a bulky soffit, cast unflattering shadows.



“Don’t be afraid of pattern. Pair it with a soft neutral palette to create a master bath retreat that’s both relaxing and modern.”

Elizabeth Rishel
designer



DESIGNER

Elizabeth Rishel owns Orion Design, a kitchen and bath design firm in Kansas City, Missouri. See more of her work at designbyorion.com.

1 bath, 2 budgets

VALUE SOLUTION

RIGHT LIGHT

Even illumination is essential for grooming. For the most flattering glow, add sconces at eye level on each side of your vanity mirrors.





TUB
Sax Freestanding
Bathtub in
White | \$1,200
Maax
maax.com



FAUCETS
Brantford Two-Handle
High Arc Bathroom Faucet
in Chrome, with valve |
\$251
Moen
moen.com



FLOOR TILE
Breton Regency Ceramic
Tile | \$17 per square foot
Original Style
originalstyle.com



SCONCES
Chatham Single
Sconce in Polished
Chrome | \$129
Restoration Hardware
restorationhardware.com

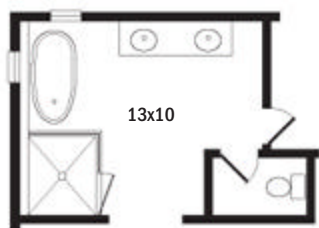
THE SOLUTIONS

1. Patterned floor tile—the bath’s big splurge—gets the attention it deserves thanks to a soft, neutral color scheme drawn from the tile itself. “The floor is a great place to make a statement,” Rishel says. Wainscoting and subway tile add architectural interest.

2. A furniture-style vanity complements the room’s cottage vibe. Trading the original run-on vanity mirror for two framed mirrors topped with crown molding creates a tailored look.

3. Removing the soffit visually opens and brightens the bath. New sconces mounted 66 inches high on both sides of the vanity mirrors provide better lighting.

4. The shower’s subway tile extends beyond the glass enclosure, forming a ledge behind the tub for candles, soaps, and wine, and “allows for a standard tub filler rather than a really expensive model,” Rishel says.



AFTER

VALUE BUDGET

FIXTURES

Maax Sax Freestanding Bathtub in White	\$1,200
Moen Brantford Two-Handle High Arc Bathroom Faucets in Chrome, with valves	\$502
Moen 4-Function Handshower with Slide Bar and Brantford Posi-Temp Valve Trim in Chrome, with valve	\$408
Moen Brantford Two-Handle Low Arc Roman Tub Faucet in Chrome, with valve	\$356
Kohler Wellworth K-3998 Toilet in White	\$294
Moen Brantford Posi-Temp Showerhead and Valve Trim in Chrome, with valve	\$188

CABINETS

Restoration Hardware Shutter Double Vanity Sink in Weathered Oak Drifted with Italian Pietra Grigio Marble Countertop	\$3,595
---	---------

SURFACES

Original Style Breton Regency Ceramic Floor Tile	\$3,000
The Onyx Collection Shower Base in Low Tide	\$1,175
Florida Tile 3x6 Dorian Matte Wall Tile	\$500
Wainscoting (materials purchased locally)	\$300

MISCELLANEOUS

Glass shower enclosure	\$1,600
Restoration Hardware Chatham Single Sconces in Polished Chrome	\$516
Sherwin-Williams paint in Morning Fog (walls and ceiling) and Passive (wainscoting and trim)	\$254
Custom mirrors from local fabricator	\$200

TOTAL

prices are estimates, excluding installation

\$14,088

MIDDLE GROUND

A tall center cabinet is a smart way to separate a long countertop into two separate spaces without overwhelming the vanity.

EYE-CATCHING TILE IDEAS

Get inspired by tile designs that take your bathroom's style factor up a notch.
BHG.com/BathTile



TUB
Verona Bath in
White Matte | \$6,800
Jacuzzi
jacuzziluxurybath.com



FAUCETS
Artifacts K-72759
Faucet with Lever
Handles in Vibrant
Polished Nickel | \$575
Kohler
us.kohler.com



FLOOR TILE
18x18 Champagne
Honed Limestone
Tile | \$9 per square foot
Marble Systems
marblesystems.com



SCONCES
Vintage English Oval
Double Sconce in
Polished Nickel | \$209
Restoration Hardware
restorationhardware.com

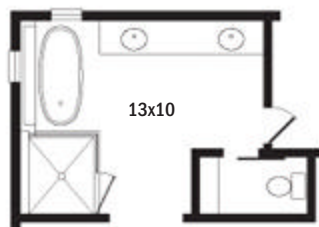
THE SOLUTIONS

1. The desire for sophisticated storage drove the design of the lattice-front comfort-height vanity with nine drawers and a center tower with hidden electrical outlets. A coordinating cabinet in the water closet corrals toilet paper and extra towels.

2. Mixing wall tiles, including an intricate accent tile, creates a high-end look. The quiet floor tile provides visual balance.

3. New round windows and curvy light fixtures help soften the room's straight lines. Exposed wood beams visually lower the high ceiling.

4. Comforting amenities make it easy to relax in this blissful bath. Radiant-heat flooring takes the chill out of cold mornings, the lower shower niche's height makes it easy to perch feet while shaving legs, a deep freestanding tub with a ledge for wine and candles invites long soaks, and dual showerheads (*handheld wand not illustrated*) offer soothing sprays.



AFTER

CUSTOM BUDGET

FIXTURES

Jacuzzi Verona Bath in White Matte	\$6,800
Kohler Artifacts K-72759 Faucets with Lever Handles in Vibrant Polished Nickel	\$1,150
Kohler Artifacts Single-Function 2.0 GPM Handshower, 60-inch Metal Hose, and Volume Control Valve Trim with Swing Lever Handle in Vibrant Polished Nickel, with valve	\$512
Kohler Devonshire K-3837 Toilet in White	\$431
Kohler Artifacts 2.5 GPM Single-Function Showerhead, Showerarm, Flange, and Volume Control Valve Trim with Swing Lever Handle in Vibrant Polished Nickel, with valve	\$415
Kohler Devonshire Undermount Bathroom Sinks in White	\$386

CABINETY

Custom oak vanity and water closet cabinet with Burnished Bronze stain by Wood-Mode	\$6,000
---	---------

SURFACES

The Winchester Tile Company 5x5 Lazul Field Tile	\$3,112
The Winchester Tile Company 5x5 Ormeaux on Palomino Chateau Accent Wall Tile	\$2,600
Marble Systems 18x18 Champagne Honed Limestone Floor Tile	\$2,400
Caesarstone 4220 Buttermilk Countertop	\$2,000
Marble Systems 2x2 Champagne Textured Limestone Mosaics Shower Floor Tile	\$380

MISCELLANEOUS

Custom windows by Marvin Windows and Doors	\$3,201
Schluter Systems Electric Floor Warming System	\$2,900
Salvaged ceiling beams	\$2,000
Glass shower enclosure	\$1,600
Sliding barn door for water closet	\$1,500
Restoration Hardware Vintage English Oval Double Sconces in Polished Nickel	\$836
Restoration Hardware Vintage Rectangular Pivot Mirrors in Polished Nickel	\$790
Restoration Hardware Rosette Knobs in Polished Nickel	\$225
Sherwin-Williams paint in Misty (walls and ceiling)	\$189

TOTAL

prices are estimates, excluding installation

\$39,427

**KITCHEN
+BATH IDEAS.**

WANTS
TO HEAR
FROM YOU!

SHARE YOUR OPINIONS
WITH US AND SEE HOW A
\$500 AMERICAN EXPRESS® GIFT CARD
COULD BE YOURS!

We want to know what makes you a true home enthusiast!

We're recruiting our most passionate readers to join our Home Enthusiast panel. Visit bhgsip.com/kbi, to help us continue to deliver the information and stories that are important to you. As a member you will be invited to share your thoughts through the occasional short survey or opinion poll.

There are limited spots available, so hurry and join today!

Visit [**bhgsip.com/kbi**](http://bhgsip.com/kbi) for a chance to win \$500 and have your voice heard!

No purchase or survey participation is necessary to enter or win. Subject to Official Rules at www.bhgsip.com/kbi. The HEP Survey Sweepstakes begins at 9:00 a.m. C.T. on 3/15/15 and ends at 11:59 p.m. C.T. on 12/31/15. Open to legal residents of the 50 United States, and the District of Columbia, 21 years or older. Limit one (1) entry per person and per email address. Void where prohibited. Sponsor: Meredith Corporation.

30

MOST INNOVATIVE PRODUCTS

2015

Smarter, faster, better, bolder—our top products of the year offer an exciting glimpse into the future, where high tech and high style seamlessly converge.

writer SAMANTHA HART





1 BRIGHT SHOWER

Integrated lighting and a distinctive birdcage design turn a modern showerhead into a multifunctional masterpiece. LampShower by Nendo, starting at \$2,260, Axor, hansgrohe.usa.com.



2 VIVID VENTILATION

Manufactured with DuPont Corian and stainless steel, this curvaceous range hood makes a bold contemporary statement. Onna, \$3,850, Streamline Hoods, streamlinehoods.com.



3 LOOK-ALIKE FLOORING

With the help of digital print technology, easy on the feet cork floors take on the look of natural wood, stone, or tile. Serenity Collection, price upon request, WE Cork, wecork.com.



4 INSTANT COFFEE

Brew a whole pot or just one cup with this versatile countertop coffeemaker that is sure to start your morning right. Crossover Brewer, \$100, TRU, bedbathandbeyond.com.

DECADES OF INNOVATION

New products have made our lives easier since *Kitchen + Bath Ideas* started in 1965.

by LINDA EGGERS

1960s

Miniskirts aside, practicality reigns. Linoleum flooring stars underfoot, and spills now mop up in a jiff.

Portable dishwashers roll right up to the sink, where grateful moms attach hose to faucet. Groovy!

Ladies, you've got friends—food-waste disposers and self-cleaning ovens eliminate messy chores.

Frost-free fridges with automatic icemakers arrive—one small step for appliances, one giant leap for womankind.



5

MODULAR KITCHEN

There is room for a full kitchen in even the smallest apartments thanks to this integrated unit, which includes cooking, cleaning, and refrigeration in a single stand alone enclosure. Micro Kitchen, starting at \$7,000, GE, geappliances.com.



7

COMPACT COOKER

Available in an array of bold colors, this iconic cast iron range shrinks to fit snugly into a small kitchen without losing any of its drama. City24 Cast Iron Range, \$8,199, AGA Marvel, aga_ranges.com.



6

SEAMLESS DRAIN

Sitting flush with the sink, this first of its kind pop down drain creates a seamless look—plus, with just two components, it's easier to install than a standard pop up drain. ZeroDrain, \$129, California Faucets, californiafaucets.com.



8

FLEXIBLE FUNCTION

An ergonomic design and flexible hose extension set this modern faucet apart. Metris 2 Spray High Arc Kitchen Faucet, starting at \$585, Hansgrohe, hansgrohe-usa.com.

1970s

Environmental awareness surges, and appliance colors go earthy—avocado, harvest gold, and copper.

Butcher-block countertops compete with laminate; on the floor, linoleum gives way to vinyl.

The work-triangle design with step-saving layouts eases the load for busy working women.

Time-saving microwave ovens—on the counter or over new glass-top ranges—make reheating a cinch.

Ain't no mountain high enough to keep kitchen messes under wraps, but raised countertop bars try.

9

EASY INDUCTION

With induction cooking, the cooking surface stays cool even while your bacon sizzles. This convenient portable set includes a single-burner cooktop and compatible aluminum skillet. 2x Induction Set, \$99.95, Fagor, fagoramerica.com.



KID-FRIENDLY DESIGN

Safety comes first with this shower door system that includes a flexible bottom track. ComforTrack Technology, compatible with Prevail shower doors, \$280 per package, Sterling Plumbing, sterlingplumbing.com.



11

LITTLE WONDER

This tiny LED powerhouse, which takes up only 3x3 inches of ceiling space, delivers 1,000 lumens from only 20 watts and lasts 50,000 hours. Choose from colorful trim options, or stick with trimless for a discreet effect. BeveLED Mini, price upon request, USAI Lighting, usailighting.com.



12

INDOOR GRILL

Hone your cooking skills with a range that doubles as an indoor grill. Grill plates cover the heating elements to prevent flare-ups, while ceramic briquettes ensure genuine smoky flavor. Professional Grill Feature shown on the 36-Inch Pro Grand Gas Range, \$8,799, Thermador, thermador.com.





13

WIRED SURROUND

This durable, recyclable aluminum wire mesh shower curtain will not fade, rust, or stain. Better yet as the steam from the shower heats the coils, it creates a wall of warmth on chilly mornings. Serenity Shower Curtain, \$449, Cascade Coil Drapery, serenityshowercurtain.com.



14

STATEMENT PIECE

Sculptural and modern, this freestanding tub available in five colors is a guaranteed showstopper. Petal Tub, starting at \$7,995, Hastings Tile & Bath, hastingstilebath.com.

“THE BEST NEW KITCHEN AND BATH PRODUCTS OFFER MORE FUNCTION WITH LESS FUSS.”

Samantha Hart

Editor, Kitchen + Bath Ideas®



15

RECYCLED HEAT

Utilizing a heat pump system similar to those found in air conditioners and dehumidifiers, this dryer recycles heat to deliver energy savings of up to 50 percent. EcoHybrid Heat Pump Dryer, starting at \$1,599, LG Electronics USA, lg.com.

1990s

The recession ushers in a new decade of simplicity and a longing for the warmth of Grandma's country kitchen.

Farmhouse sinks, oil-rubbed bronze hardware, bridge and gooseneck faucets... it's all good.

Hardwood floors suit the cottagey trend, and marble and granite countertops make rolling out dough easy.

Jewelry becomes "bling," and kitchens get some sparkle, too, with stainless-steel and pro-grade appliances.

Cooking is so cool. And the tools? Convection ovens, dual-fuel ranges, digital controls, yadda, yadda, yadda.

16

INVISIBLE FAN

Say good bye to obtrusive ventilation fans—this stealthy version hides behind a recessed light fixture in the ceiling. WhisperRecessed LED, \$325, Panasonic Eco Solutions North America, panasonic.com.



17

CUSTOMIZABLE SINK

Three sinks and five accessory kits allow consumers to create the perfect combination for their needs. Blanco One Sink collection, starting at \$580, Blanco, blancoamerica.com.

18

RELAXATION STATION

Create the ultimate spa like showering experience with this digital interface that controls music, steam, chromatherapy, and more. DTV+, starting at \$3,000, Kohler, us.kohler.com.



19

SMART COOKING

Stay connected while you cook with this pro style range that includes a wireless tablet computer. Use the sleek control panel to search for recipes online while you whip up your culinary masterpiece. Discovery iQ 48 inch Dual Fuel Range, \$11,999, Dacor, dacor.com.



20

TOUCHLESS TOILET

Forget that old trip lever—just wave your hand over this toilet's innovative sensor to activate a flush. San Souci Toilet featuring Touchless Technology, starting at \$933, Kohler, us.kohler.com



SIMPLE ADJUSTMENT

With 50 degrees of adjustability in any direction, these body sprays give everyday showering a boost. HydraChoice Max Body Spray, starting at \$160, Brizo, brizo.com.



22

TRENDY TILE

An exquisite mix of marble and porcelain tiles creates a distinctive look inspired by classic fabric patterns. Exclusive water-jet technology allows for precise carving of the stone. Sterling Row, \$55-\$155 per square foot, Walker Zanger, walkerzanger.com.



23

RAPID CHILL

A special compartment in this large-capacity fridge cools a 20-ounce drink bottle in just eight minutes. Kenmore Elite 30-cubic-foot Accela-Chill French Door Refrigerator, \$3,499, Kenmore, kenmore.com.



Cooking gets easier with induction, steam, and speed-cook options that save time and preserve nutrients.

Filtered-water faucets and instant hot-water taps boost function at the kitchen sink.

Michael Phelps wins eight gold medals, and kitchens flaunt jewelry, too—hardware with sparkle and shine.

Glass backsplash tiles deliver contemporary verve, but classic subway tiles are still a kitchen's best friend.

Eco-friendly products like bamboo flooring and compact fluorescent lights (CFLs) make it easy to go green.



24

DIY DREAM

A proprietary mounting system enables this faucet to be mounted from above the sink, eliminating the need to crawl under the sink to tighten the faucet. Ashlyn collection with EZ Anchor, starting at \$129, Delta, deltafaucet.com.



25

CLEANING POWER

There's a new way to clean dishes and it's better than ever. An exclusive spray bar delivers a sweeping wall of water to leave even the dirtiest dishes sparkling clean. Chef Collection Dishwasher with WaterWall Technology, \$1,599, Samsung, samsung.com.



26

SURFACE APPEAL

Resistant to moisture, heat, staining, and scratching, this ultra durable surface offers the timeless look of stone without the maintenance. DuraLosa, \$100-\$150 per square foot, TheSize, thesize.es.

27

FAN FAVORITE

This intuitive and affordable bath fan automatically turns on when moisture is present and off when dry. Bathroom Condensation Control, \$49, DewStop, dewstop.com.





“IN THE PAST FIVE YEARS, HIGH TECH SOLUTIONS HAVE BECOME MORE ACCESSIBLE AND AFFORDABLE.”

Samantha Hart
Editor, *Kitchen + Bath Ideas*®

28

WINNING COMBINATION

Select from steam, true convection, steam convection, or specialty modes—this versatile oven will do the rest. Benchmark Steam Convection Oven, \$3,099, Bosch, bosch-home.com.



29

STREAMLINED STORAGE

Now you see it, now you don't: That's the beauty of this 4½ inch deep mirror cabinet, which deftly conceals an abundance of storage in the form of two pullout shelves. Decorá Cabinetry Bath Mirror Pullout, MasterBrand Cabinets, Inc., decoracabinets.com.



COOL STYLE

With its clean lines, silver trim, and bold colors, this retro modern fridge is the perfect hybrid of old and new. Pro Fridge, \$3,740, Big Chill, bigchill.com.

LEDs, or light emitting diodes, revolutionize lighting as we say good-bye to temperamental CFLs.

Cabinets—freestanding or built in—are less fussy, more streamlined, and have touch-to-open doors.

Reclaimed wood lets us embrace the past while creating industrial-chic spaces primed for the future.

Open shelving makes for an easier reach, as does base cabinetry that uses soft-close drawers instead of doors.

Our highly personalized kitchens tell the world who we are. What better place for a selfie?



THIS PHOTO: The 7½-foot-long island sports a generous marble overhang with enough legroom for the Reece boys to sit and eat lunch or talk to Mom while she's making dinner. Clear-glass pendants with dark metal frames and chains offset the tall ceiling.



COLONIAL REVIVAL

Sunlight, space, and smart traffic patterns transform an awkward kitchen into a family-friendly wonder.

writer DEBRA STEILEN
photographer KIP DAWKINS
field editor MONA DWORKIN



Before: Competing styles made the kitchen a classic example of mix and match gone wrong.



Ornate cornices above the windows and cabinets of this Richmond, Virginia,

kitchen display the gravitas expected of a Colonial style house in the heart of Colonial America. But below the molding, it's all about feel good family life.

When Kaden and John Reece renovated the home for their family, which includes four young sons, kid friendly features were a priority. The house had spacious rooms but lacked the flow today's families need for everyday living. This was especially true of the kitchen, which had too many doorways, an awkward exposed chimney, and a spiral staircase. An adjoining family room addition built in the 1960s barely helped.

Kaden worked with designer builder Steve Berg to create a European style kitchen with an open floor plan. "We're transplants from California," she says. "We're used to a lot of light. And we knew we wanted the kitchen to be the central hub of the house."

Demolishing the 1960s addition, building a new one, and eliminating excess doorways set the stage for the family friendly kitchen and breakfast room Kaden envisioned. Natural light abounds, thanks to tall,



ABOVE: A polished-nickel faucet with Edwardian curves adorns the island's white farm sink.
RIGHT: The stately range hood has shelves in the columns that make it easy for homeowner Kaden Reece to grab oils and seasonings while cooking.
OPPOSITE: A transom-topped window offers a beguiling view to anyone working at the sink.





THIS PHOTO: This run of cabinetry functions much like a butler's pantry, providing a convenient staging area for food and beverages.

OPPOSITE, BOTTOM LEFT: The Reeves eat most of their meals in the adjoining breakfast room, which is why the two dishwashers were installed at the island's end. **OPPOSITE, TOP RIGHT:** Kaden chose a vintage-look trestle table and pew to add the warmth of wood to the breakfast room.



transom topped windows on a wall that was kept free of upper cabinets — key to the European look Kaden sought. “From a design standpoint, it’s also about the openness and the view,” Berg says. “I try to develop every room with the idea you can see through it to something else.”

The exposed chimney (which could not be moved) and the range’s ventilation system (which could only go in one place) drove the kitchen’s floor plan, Kaden says. The chimney, now painted white to match the walls, is flanked by base cabinets. An adjoining wall houses the range and a doorway to the formal dining room. The third wall — which includes a pantry, glass front cabinets for dishes, and the refrigerator — makes up for storage lost when the exterior wall went without upper cabinets. Along with a multitasking island, the resulting work zones let the kids come and go without getting in Kaden’s way when she’s cooking. “The kitchen occupies the same footprint it occupied before,” Berg says. “But back then it had too many moving parts. Now it’s a functional space.”

It’s a happy one, too. White painted cabinetry, marble countertops, and white tile backsplashes create a bright atmosphere. “I didn’t want this kitchen to feel stuffy and formal,” Kaden says. “I wanted people to feel comfortable when they’re in it. So I love it when friends, family, and my kids are here and everyone ends up in the kitchen.” **KBI**

RESOURCES BEGIN ON PAGE 138.



bright idea

Visually divide a wide open space into defined rooms with beefy trim and different styles of light fixtures.



Streamlined storage elevates this open-plan galley kitchen's function. The exposed brick wall is a remnant from the original architecture.



GOOD GALLEY

Clean lines and minimalist decor suit a kitchen that's at the center of it all.

writer and field editor MINDY PANTIEL
photographer EMILY MINTON-REDFIELD



THIS PHOTO: No-nonsense, easy-clean materials form the cooking wall's backsplash. Stainless steel catches cooking splatters behind the stove, while white quartz-surfacing, chosen because it wouldn't compete with the exposed brick, lines the rest of the wall. **OPPOSITE TOP:** The lift-up design of the upper cabinetry saves space. **OPPOSITE BOTTOM:** Pullouts on each side of the range have adjustable shelves to accommodate items of varying sizes.

a

key principle guides residential developer Elysia Viets on the job: “Never design a space based on square footage. Design it based on your

lifestyle.” She wisely followed her own advice when renovating the main level of the 1940s Denver bungalow she shares with her husband, Chris, and their two young children. “We are very casual people, so I wanted no formality whatsoever, and that translated into one big, open living space,” she says.

The kitchen is the heart of the open layout. “I wanted the largest, most utilitarian galley kitchen imaginable, and I wanted it right in the middle of everything,” Elysia says. “I know many people don’t like galleys, but I love that you can enter them from both sides, that they are functional, and everything is open and visible from every vantage point.”

Because of that, “clean” and “simple” quickly emerged as design themes. Elysia chose smoky brown laminate cabinets with a wood grain look and white quartz surfacing countertops. “I wanted no frills,” she says. “We purposefully avoided





bright idea

Update cabinets with frosted glass panels. They scatter light around the room while blurring contents.



anything glossy or bright for the cabinets and went with a matte finish because we didn't want to overpower the home's historic charm."

Everything revolves around a large island that was designed in part with homework and supervised computer time in mind. "I can be cooking and easily keep an eye on the kids, and when friends come over, the entire kitchen operates as a communal center," Elysia says. "People can chop veggies and sip wine or feel free to wander to other parts of the room and still be part of the action."

Thanks to thoughtful cabinetry, a visible lack of clutter contributes to the kitchen's fuss-free vibe. Two pullouts flank the gas range for handy storage of nonperishables, oils, and other often-used ingredients, and extra-deep drawers house pots and pans. The kitchen's styling extends into a mudroom where personalized lockers corral each family member's gear and a built-in pantry provides additional food storage.

"We intentionally worked with a local cabinet manufacturer so we could not only get a more quality product but also customize the kitchen to our specific needs," Elysia says. And she credits her favorite design tenet for the success of her kitchen remodel: "We looked at the space as a whole and designed it for us and the way we live." **KBI**

RESOURCES BEGIN ON PAGE 138.

OPPOSITE TOP: An industrial-style faucet nods to the kitchen's contemporary vibe.

OPPOSITE BOTTOM: Tucking the refrigerator inside a custom niche gives it a built-in look. Above the refrigerator, a cabinet with a frosted-glass front stores infrequently used items.

THIS PHOTO: The working side of the island includes a sink, microwave, and dishwasher. Having the sink in the island allows the cook to keep tabs on activity while working.



QUIZ: FLOORING MADE EASY

This interactive quiz points you to the right flooring material based on your style preferences, budget, and more. [BHG.com/FindFloors](https://www.bhg.com/FindFloors)

blue cheer

AN ISLAND FULL OF FUNCTION,
STORAGE, AND COLOR INVIGORATES
THIS REIMAGINED GALLEY KITCHEN.

writer and field editor LISA MOWRY
photographer EMILY J. FOLLOWILL



White cabinets recede into the back wall, allowing the deep-blue island to stand out. "You can treat an island differently from other parts of the kitchen as long as it somehow relates to the other areas," architect and interior designer Ili Hidalgo-Nilsson says.



Before: The island interrupted the kitchen's flow and drew the wrong kind of attention.





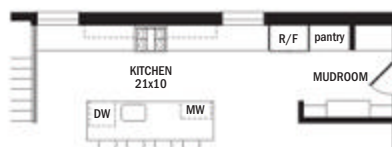
bashful to bold—a shift in color confidence gave this Atlanta kitchen its signature look. Though one of the homeowners had put plenty of colorful rooms on her Pinterest boards, she had shied away from using vibrant hues in her own home. Once architect and interior designer Ili Hidalgo Nilsson convinced her that color was nothing to be afraid of, a crisp white kitchen emerged with a deep blue island as its dramatic focal point.

“The island is a way to impact three rooms visually, because it’s also seen from the dining room and family room,” Hidalgo Nilsson says. “And the blue is such a soothing tone.”

All the cabinetry has a glossy lacquer finish, which adds a European sophistication to the room. A glass front refrigerator and globe shape pendant lights are both a little modern and a little traditional, just like the cabinets.

The existing galley kitchen was limited in size, and adding on to the house wasn’t an option. But Hidalgo Nilsson still fit in

OPPOSITE: Lacquered blue cabinetry and acrylic-and-chrome handles distinguish the island. A beverage refrigerator and a dishwasher anchor the ends of the working side. **ABOVE LEFT:** A built-in office nook includes a charging station for electronics and a bulletin board for photos and schedules. **ABOVE RIGHT:** Although there wasn’t space to add a mudroom, the clever bench on the island boasts underseat storage and functions just as well.







most of the items on the homeowners' wish list. The hardworking 10 foot long island holds a farmhouse sink, dishwasher, and trash compactor, as well as a beverage refrigerator and other storage. On one end of the island, a built in bench offers a place for the homeowners' young son to sit and color or put on his shoes.

A wall of cabinetry next to the microwave and oven includes pullout pantry units and a roll out appliance garage something Hidalgo Nilsson sees as a necessity: "If you want a seamless white kitchen, you have to corral your appliances in a way that's useful."

In another streamlined touch, Hidalgo Nilsson used milky white quartz surfacing for the countertops, and then continued the same material up the wall as a backsplash. "It will keep a consistent look for years," she says. Similarly, white open shelves keep everyday items close at hand and visually break up the wall of cabinets.

Perhaps most important, the wash of white plays nice with the kitchen's starring hue. The playful pop of blue is proof positive that a little color courage goes a long way. **KBI**

RESOURCES BEGIN ON PAGE 138.

OPPOSITE: Stainless-steel appliances, including a curved range hood, break up the expanse of white cabinetry and countertops without competing with the blue island.

ABOVE LEFT: The commercial-style chrome faucet offers a versatile spray and doubles as a sculptural element.

ABOVE RIGHT: Gadgets tuck away in the appliance garage. The unit's electrical outlet and roll-out shelf have the small appliances ready to go at any time.



bright idea

Preserve a shiny lacquered finish with regular cleaning. Test cleaners on a hidden area before using.

In this North Carolina getaway home, nature-inspired color and pattern blend perfectly with the woodsy setting and mountain views. Antique heart pine floors further the kitchen's down-home feel.





SIMPLY SERENE

In the North Carolina mountains, a summer home's kitchen pleases family and friends with its low-key style.

writer LINDA EGGERS
photographer BRIE WILLIAMS
field editor ANDREA CAUGHEY



Y

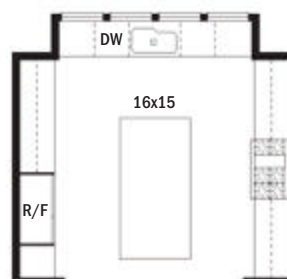
ou might think the kitchen of a new home sited for wraparound Appalachian mountain views would have a design as jaw dropping as the scenery. Instead, the owners and designers of this summer home deferred to the views by crafting a decidedly simple kitchen—one that keeps to the unpretentious mountain style more than those in other new getaway homes nearby.

“Our clients wanted it to be clean and simple, so our challenge was to make it super functional and uniquely beautiful without getting too ornate or fancy,” kitchen designer Paul Bradham says. To achieve their vision, he specified basic Shaker style cabinet doors with rustic finial hinges and slab front drawers. He then added milky shiplap siding installed vertically on the backsplash, a beaded board ceiling, and antique heart pine floors. The homeowners also wanted the kitchen to reflect its natural wooded setting, which prompted their countertop choice—honed marble with the fossilized look of earth, leaves, and moss.



OPPOSITE: A pro-style range provides all the power needed to serve up food for extended family and friends. Kitchen designer Paul Bradham designed the custom range hood and specified simple shiplap siding installed vertically on the backsplash.

LEFT: On the island, full-inset Shaker-style doors and drawer fronts combine with chunky feet and custom French hardware for a sturdy look and feel. **ABOVE:** A wall of windows framing mountainscapes makes working at the sink enjoyable.





THIS PHOTO: Open shelving adds to the yesteryear character of a kitchen designed in simple mountain style and encourages a casual summer-home lifestyle. A sizable built-in refrigerator goes undercover with door fronts that match the cabinetry. **OPPOSITE TOP:** Open shelves with pinboard backing cozy up to one side of the fridge. **OPPOSITE BOTTOM:** Storage space abounds, including open shelving in both the perimeter cabinets and the ends of the island.



bright idea

Love marble but fear the upkeep? Pick a forgiving variety—one with a honed surface and a mottled pattern.

“It looks just like the ground in the woods’ understory,” interior designer Lucile Clarkson says, “and it drove the decision to paint the cabinets a soft sage green, glazed in brown and dry brushed.”

Bradham lined the kitchen’s perimeter with floor to soffit cabinetry painted in the tranquil color, integrating appliances with matching fronts and interrupting it only to showcase a pro style range. He centered the sink on a wall of tall windows, clad their sills in the countertop’s mottled marble—for better water resistance and a quietly luxe look—and packed an oversize island with storage.

The island accommodates a pair of refrigerator drawers, a bread drawer, knife storage, and dedicated cabinets for cutting boards and baking sheets, a roll out for the food processor, and a 3 foot wide flatware drawer. Bradham also equipped perimeter cabinets with roll outs for pots and pans and made sure there was a walk in pantry for staples. Open shelving within a stretch of upper cabinets allows easy access to plates and dishware.

Clarkson, who describes her role in the project as “the icing on the cake,” adds: “The colors we chose came together like those in an Eliot Porter nature photograph, complementary to the Audubon bird prints throughout the home and in tune with the owners’ incredible garden.”

As a result, the kitchen is well used, and the owners wouldn’t have it any other way. All their children, grandchildren, and friends enjoy being there. Clarkson says, “It’s the kind of kitchen—and home—where everyone feels comfortable. It’s just what they wanted in the mountain setting.” **KBI**

RESOURCES BEGIN ON PAGE 138.







fresh approach

Designed for family life and serious cooking, this kitchen also shows its sophisticated side.

writer and field editor LISA MOWRY
photographer EMILY J. FOLLOWILL

THIS PHOTO: Chic shades of gray bridge the gap between classic and contemporary in this transitional kitchen. Dark-stained flooring anchors the room.



Before: Bland builder-grade fixtures and finishes failed to leave a lasting impression.

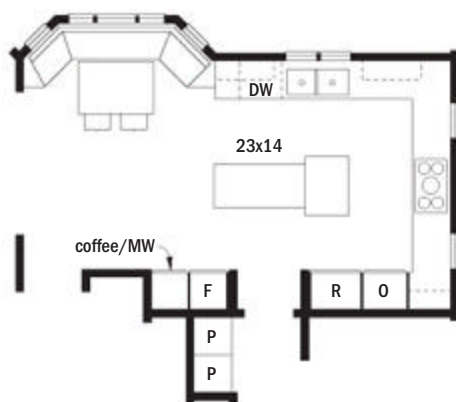


The meals that Sonnia Khalil serves are fixed with care and full of taste. The same can be said about her kitchen.

In fact, her cooking preferences guided the remodel of her Atlanta kitchen. “Most of what we eat is fresh, and I cook every day, so I wanted a kitchen with a big refrigerator, an easy to clean cooktop, and lots of storage,” Sonnia says.

Kitchen designer Matthew Rao cooked up a space as fresh as the fare, combining Sonnia’s needs with her husband Noel’s inclination toward modern design. Out went the awkward builder grade cooking space, and in went a sophisticated and functional upgrade. “We couldn’t go too modern because the house is traditional and didn’t fit that look, so we went with a streamlined version of traditional,” Rao says.

Pale gray cabinets with paneled doors provide the traditional look needed to ground the design, but Rao added some contemporary touches, starting with a lacquer finish on the cabinetry. A travertine tile backsplash taken all the way to the ceiling brings an unexpected look to the back wall. A modern stainless steel hood becomes the focal



ABOVE LEFT: A high-arching faucet and filtered water tap serve a large-capacity sink with three basins that are ideal for multitasking. The steel-gray granite countertop “is impervious to anything,” says kitchen designer Matthew Rao. **OPPOSITE:** Refrigerator and freezer doors clad in cabinetry panels flank a short hallway to the pantry. Arranging the appliances which include a built-in espresso maker, multiple ovens, and a warming drawer on both sides of the entry provides visual relief.



bright idea

Test cookware before buying an induction cooktop. If a magnet sticks to the bottom, it's compatible.





point for the cooking zone, which features Sonnia's requested induction cooktop (easier to clean because there are no raised burners) and another distinctive element: drawers clad in stainless steel that hold pots, utensils, and other cookware.

A multilevel island accommodates food prep while making a style statement. A tall section next to the stove is topped with walnut butcher block for chopping produce. The adjacent lower portion is covered in marble, with metal legs for contrast. "There's a play of cool and warm that goes on in this kitchen," Rao says.

To provide eat in dining with easy navigation, Rao converted a side space into a banquette seating solution rather than trying to squeeze in a table and full set of chairs close to the work area. The seating fits the lifestyle of the Khalils, who have two small children. "We haven't ever used the formal dining room," Sonnia says. "Our everyday life is at the banquette."

Interior designer Ken Knight chose metal and crystal light fixtures as glam finishing touches. The fixtures pair with the large new casement windows flanking the cooktop to provide ample ambient and task lighting, illuminating a space that's swanky yet still entirely sensible.

"This is a room designed for family life," Rao says, "but it's a dressed up version." **KBI**

RESOURCES BEGIN ON PAGE 138.

OPPOSITE, TOP LEFT: Crystal detailing catches the light cast by these pendants. **OPPOSITE, TOP RIGHT:** Travertine tiles form a beautiful backsplash. The tiles' generous size minimizes grout lines, which keeps the focus on the stone's natural beauty. **OPPOSITE, BOTTOM LEFT:** Deep drawers include two-tier storage that enhances their capacity. **OPPOSITE, BOTTOM RIGHT:** Extra-thick butcher block tops the prep island for a long-lasting work surface. **ABOVE RIGHT:** The kitchen's varied countertop materials—granite, marble, and wood—are equally stylish and well-suited to different meal-prep tasks.



We couldn't go too modern because the house is traditional and didn't fit that look, so we went with a streamlined version of traditional.

Matthew Rao
designer



THIS PHOTO: The Shaker cabinets' clean lines bring long-lasting style to this kitchen. Varying textures—beaded board, marble, and wood—add subtle contrast.

PERFECT FIT

Proper planning leads to a kitchen with a defined work triangle, smart storage, and an emphasis on texture.

writer STACEY FREED photographer WERNER STRAUBE field editor MEGAN CHAFFIN



Before: The island cooktop was unsafe; poor traffic flow hindered meal prep and entertaining.



bright idea

Add texture and depth to a standard subway tile backsplash with raised edge or beveled tiles.





FUNCTION IS EVERYTHING.

OPPOSITE: Removing soffits during the remodel gained height and space; two-piece crown molding enhances the classic style. Lights on the underside of the upper cabinets provide task illumination.

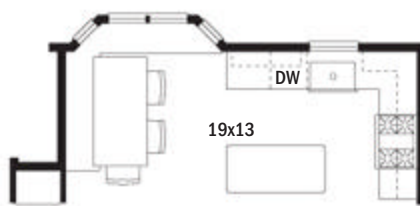
ABOVE LEFT: Cabinet dividers that keep bakeware upright make it easy to select the right pan for the task at hand. **ABOVE MIDDLE:** At first glance, the backsplash looks like ordinary subway tile, but the tiles' raised edges give the wall unexpected interest. **ABOVE RIGHT:** Open shelving lightens the look of the kitchen without sacrificing storage. Thick brackets provide the visual weight needed to balance the shelves with the cupboard on the other side of the window.

What good is a large refrigerator if you always run into it on your way to the table? Or a stellar cooktop set in the middle of the room with no backsplash or ventilation? Without functionality, even the most beautiful items in a kitchen lose their charm. That's how Naperville, Illinois, homeowners Deborah Nilles and Kevin Knoth felt about their kitchen. They knew it was time for a change.

As a real estate agent dealing in high end homes, Deborah has spent time in "the most beautiful kitchens in Chicago," she says. "I knew what kind of stone I wanted, what kind of cabinetry I wanted." She also knew she needed help to realize her vision. She got it from designer Ann Stockard at Normandy Remodeling.

Deborah loves to bake and entertain. She didn't want to add square footage, yet she still wanted to be able to host large gatherings and have space for all her cooking and baking supplies.

Stockard improved the flow and safety in the kitchen's work zone by carefully placing the appliances around the perimeter.





“Everything Deborah chose for this kitchen is slightly unexpected and detailed.”

Ann Stockard
designer

Custom storage solutions, such as spice drawers, bakeware dividers, and a trash pullout, answered the need for more space. Stockard also created more room by having Normandy's carpenters build a banquette with a hinged seat and deep storage underneath. “All our holiday dishes are there,” Deborah says, “and instead of seating only four people like we used to, we can seat 10.”

Deborah and Stockard collaborated on colors, finishes, and textures to add depth to what at first appears to be a simple white kitchen. “Everything Deborah chose for this kitchen is slightly unexpected and detailed,” Stockard says. The tile backsplash is a prime example. “If you look closely, each tile is recessed, with a ridge all around it,” Stockard says. There's asymmetrical balance at the sink area with open shelves on one side and cabinets on the other. Recessed lights gleam with mirrored chrome interiors. Light paint colors—cream cabinets and a sandy hue on walls—open up the space and contrast the floor's dark espresso stain. For texture, the wooden table is a great foil for the smooth, high gloss backsplash and the matte finish Calacatta marble countertops.

These thoughtful decisions imbue the kitchen with elegance and effortless functionality. But perhaps more important, they add up to what Deborah describes as her “forever kitchen”—the gathering spot she always dreamed of. “At the holidays, we do breakfast with my dad,” she says. “I'm cooking and everyone's sitting around the table. We're chatting. That's huge.” **KBI**

RESOURCES BEGIN ON PAGE 138.

OPPOSITE LEFT: Beaded-board paneling gives way to open shelving at the end of the island.

OPPOSITE MIDDLE: The homeowners splurged on appliances and fixtures, including this sculptural chrome faucet and its accessories. **OPPOSITE RIGHT:**

An armoirelike unit at the end of the banquette offers wineglass storage, a coffee station, and deep drawers for table linens.

THIS PHOTO: The banquette makes good use of an unused corner and frees up floor space in the kitchen's work zone.



BUILD A BETTER BANQUETTE

Bench-style seating is ideal for casual dining in large and cozy kitchens alike. Let these 16 stylish ideas inspire you. BHG.com/EatInIdeas

layout



**Hardworking
spaces make
entertaining
as easy as
everyday
cooking.**

Lessons

AN INNOVATIVE
FLOOR PLAN
AND CLEVER
DETAILS SPELL
SUCCESS IN THIS
FRESH KITCHEN.

writer and field editor HEIDI PEARSON
photographer WERNER STRAUBE

**Bonus
features
throughout
the kitchen
boost the
overall
wow factor.**

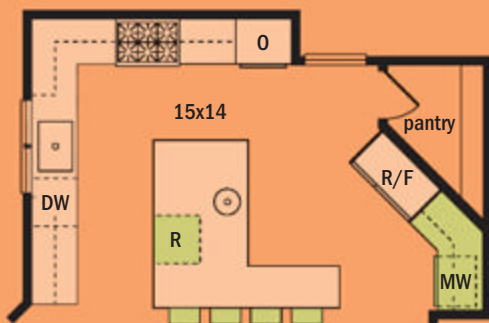


An L-shape island with waterfall edges is the kitchen's dramatic yet high-function focal point.

fresh angle
The island's shape puts a prep sink, cookware storage, and a trash center in easy reach.

hardworking spaces ▶

Avid hosts Cam and Kathy Hagen designed their kitchen to accommodate crowds. A generous footprint lends breathing room, while large appliances placed on the perimeter (labeled in peach) give the couple room to cook. Guests and breakfast grabbers have what they need at the edges (in green).



smart sink

The Hagens chose an extra-deep sink to hide tall stacks of dishes and cookware during parties. "We'd rather enjoy our company and clean up later," Kathy says.



contained cooking zone

The six-burner gas cooktop, *top*, is strategically placed on the kitchen's back wall to keep guests safely away from steam and oil spatters.

twice as nice

Positioned opposite the fridge, the prep sink, *above left*, speeds up daily dinner preparations and can double as a bar sink for weekend gatherings.

clustered task lighting

Spherical glass pendants, *above right*, supply task lighting over the island without hindering views. The pendants' strategic spacing ensures even illumination.





bonus features ►

A thoroughly researched list of must haves helped the Hagens create a kitchen brimming with swoon worthy details that perform as well as they look. One example: The kitchen's angled wall isn't just for maximum visual flow; it also conceals a cleverly devised walk in pantry.



beverage center

Guests of all ages can easily grab chilled drinks out of the undercounter refrigerator, *top*.

glass act

Stacked monochromatic glass tile on the backsplash, *above left*, adds depth and interest. Plus, it's stain- and water-resistant for easy wipe-clean maintenance.

self-service shelving

Open shelving integrated into the upper cabinets, *above right*, houses frequently used coffee mugs yet leaves clearance for countertop appliances.



higher calling

Top-hinge cabinets around the perimeter maximize storage and create a strong horizontal line that prevents the ceiling from feeling too high.



The upper cabinets merge function and proportion with a combination of open, closed, and sneak-peek storage.

coffee station

Thoughtful organization and a smartly placed microwave make breakfast on the go a breeze for the Hagen family.



THIS PHOTO: "Because the kitchen is so open to the family room, we treated it more like a living space," architect and interior designer Ili Hidalgo-Nilsson says. She designed a comfortable and chic banquette that makes the island part of the dining area. The storage-packed mudroom is to the left.

swede spot

AN ATLANTA KITCHEN
DRAWS FROM
SCANDINAVIAN
INFLUENCES IN THIS
HIGH-STYLE REDO.

writer and field editor LISA MOWRY photographer JEFF HERR stylist ELIZABETH BEELER



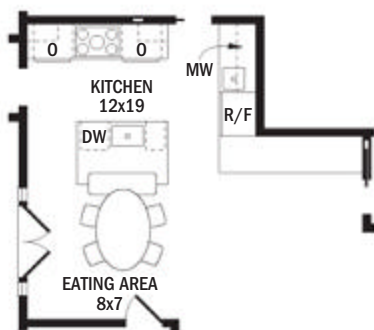
Before: Dark walls, constricting cabinetry, and clutter created a cavernous, chaotic vibe.





BECAUSE SUNSHINE CAN BE

OPPOSITE: Strapping and rivets add eye-catching depth to the range hood. **ABOVE:** The adjacent mudroom includes plenty of discreetly located outlets for charging electrical devices. A lift-up countertop hides everyday items. **ABOVE RIGHT:** A deep sink keeps dirty dishes off countertops. Darker granite on the island provides contrast to the lighter colors throughout.



scarce in Sweden, homeowners there gravitate toward light and clean interiors. That serene Swedish style is just as important for Evy and Bengt Nilsson in their Atlanta home as it is in their summer place in Sweden, and it guided their kitchen design. “The kitchen had the potential to be bright, fresh, and open,” says architect and interior designer Ili Hidalgo Nilsson, the couple’s daughter in law.

When it was time to update her in laws’ builder grade house from the ’80s, she kept nothing of the old, dark kitchen. Hidalgo Nilsson changed the layout from a galley to an L shape for better flow, and she wrapped the room in light gray cabinetry and classic Calacatta Gold marble which dresses perimeter countertops and the backsplash to provide a calm color palette.

As a counterpoint to all the light tones, Hidalgo Nilsson topped the island with rich Emperador Dark granite. “With so much marble on the counters and with the breakfast room table, we joked that it was beginning to look like a quarry,” she says. “We didn’t want too much white.” On a practical note, because granite is also less likely to stain, it’s strategically used in an area where food prep might lead to splashes and spills.

The island serves not only as a prep and cleanup center, but also as an integral part of the kitchen’s swanky seating area. A banquette bench built into the island draws visitors to the breakfast area right



away, so they don't get in the way of anyone cooking, Hidalgo Nilsson says. Light gray chenille on the bench seat picks up the gray tones in the marble top of the table, which itself is in the Tulip style of renowned Scandinavian designer Eero Saarinen. "We wanted some texture here, so the chenille adds that while still keeping it in the gray family," Hidalgo Nilsson says.

A custom steel vent hood, flanked by antique bronze sconces, offers another focal point. Hidalgo Nilsson loves the mix of metals. "They're complementary tones, both with warmth," she says.

In keeping with the clean design, Hidalgo Nilsson concealed the dishwasher and refrigerator behind cabinetry panels. "We tried to give everything a furniturelike look," she says. She hid the microwave in an upper cabinet with retractable doors so that it's out of the way as well.

As another clever touch, the designer created a mudroom from a slice of space borrowed from the garage. This small room has a different look from the main kitchen, with a butcher block countertop and metallic wallpaper. The cabinets are designed to provide a place for mail, junk drawers, and charging electronics.

"Before, there was never any place to put anything," Hidalgo Nilsson says. Now, the kitchen can handle multiple generations at once, as well as plenty of "stuff" that's neatly tucked away, all in a cheerful space that's as beautiful as it is functional. **KBI**

RESOURCES BEGIN ON PAGE 138.

ABOVE LEFT: The custom stainless-steel range hood includes a rod with hooks for hanging cookware. **ABOVE:** Hidalgo Nilsson placed the microwave at eye level for easy use, and near the beverage center for heating up water for tea. **OPPOSITE:** To create a light-filled kitchen, the pale gray cabinetry has a glossy finish and the upper cabinets include glass inserts to reflect more light.



bright idea

Save space and steer traffic away from the work area by building a banquette into an island.

“Because the kitchen is so open to the family room, we treated it more like a living space.”

Ili Hidalgo-Nilsson
architect and interior designer



A rustic Italian-style kitchen featuring a large island with a white marble countertop and three wooden bar stools with woven seats. The background shows cream-colored cabinets, a dark wood arched cabinet, a brick backsplash, and a large brass pendant light hanging over the island. The ceiling has exposed wooden beams.

italian romance

OLD-WORLD CHARM
BRINGS WARMTH TO
A TIMELESS KITCHEN.

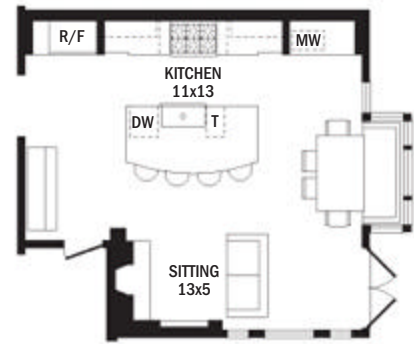
writer MERVYN KAUFMAN
photographer PAUL DYER
field editor KAREN REINECKE
stylist SARAH ALBA



Two arched niches help establish the kitchen's symmetry. Behind the dark-stained panels on the left is a built-in refrigerator-freezer; on the right, a built-in wine cooler and a roomy appliance garage.

THIS PHOTO: An attention-grabbing cast-limestone hood painted to blend with the room's color palette crowns a 36-inch professional-style range. **OPPOSITE, TOP LEFT:** An oversize double-basin sink, crafted of fireclay, assists dish duty and meal prep. **OPPOSITE, TOP RIGHT:** The owners chose neutral gray tile for the backsplash. The centerpiece over the range is made of handmade tiles in a herringbone pattern. **OPPOSITE BOTTOM:** Pullout baskets are useful for keeping root vegetables and dry goods accessible.





an extended stay in Tuscany changed Heather Dempsey's life. It's where she met her husband, Massimo Mallamace, and where her view of interior design began to transform. When the couple moved to San Francisco and purchased a four story Victorian in scenic Pacific Heights, they focused on bringing Italian influences into the kitchen.

"The house had undergone some remodeling in the late '80s or early '90s," Heather says, "but the kitchen was really unattractive. It lacked character." In fact, it felt more like an office than a cook space with its long bank of plain cabinetry and black appliances, Heather says. The space still had some things to recommend it, though. A wall of windows embraced a distant city view, and a previous remodel had merged the kitchen and family room into a single, extended space.

Work with a local contractor, Randy Raugh of Berquist Builders, connected the couple to Erin McGilvery of Folio Design in Del Mar, near San Diego. Sketches, swatches, and material samples were passed up and down the state as Heather and Massimo selected the materials, colors, and finishes that would give their all American kitchen more than a hint of Italian flavor. That effort began with the 17th century Tuscan pine cabinet the couple had shipped home from Europe. "It became our inspiration piece," Heather says. "We knew instantly that we had to work it into our space." Custom cabinetry, finished in two

BELOW: Intricate satin-nickel fittings subtly add to the kitchen's charm. **BOTTOM:** The pyramid pattern of the cabinet panels was a popular design motif in 18th-century Italy. **RIGHT:** The Tuscan pine cabinet's elegant cornice inspired the perimeter cabinetry's trimwork. **OPPOSITE:** The double-pedestal walnut dining table is another Italian antique.



tones, furthers the feel, with inset pyramid style panels that recall elements of traditional Italian design.

The kitchen's focal point, however, is its handmade limestone range hood over a pro style range. In between is a framed panel of handmade tiles set in a herringbone pattern. Flooring is a random arrangement of limestone tiles in a timeless finish.

The revised layout suits the needs of each of the owners Massimo, the principal cook, specified the arrangement of work space, appliances, and storage that best suits the way he works, while Heather, the pastry chef, enjoys a compact and efficient baking center.

With a 10½ foot ceiling in their kitchen, the couple chose to install faux beams boxed in reclaimed barnwood to add intimacy and character to the space. "We love the rustic farmhouse look," Heather says. "Here, it adds a warm, welcoming feeling to counterbalance all the hard stone and marble." Coziness also comes in the form of a cushy dining nook made possible by a small bump out.

Planning the perfect kitchen took Heather and Massimo about six months, and they say it was more than worth the wait. "We measured and remeasured everything we owned to make sure it would all fit," Heather says. "In the end, you're the one who knows what you need. We couldn't be more pleased with the results." **KBI**

RESOURCES BEGIN ON PAGE 138.



bright idea

Layer weathered woods, aged metals, and pretty details to capture old world character.



CROWD PLEASER

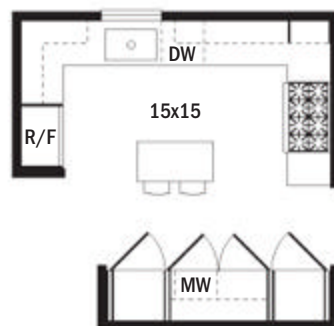
Breakfast for two or for 20 is no problem in a kitchen designed for everyday living.

writer JAN SOULTS WALKER
photographer KIMBERLY GAVIN
field editor ELAINE ST. LOUIS



European white oak flooring, made up of substantial 16-inch-wide planks, warms the kitchen and visually unites the serving area with the work core.





m

agical. Contemporary.
Cottage. “Those are
the three words the
homeowners gave me

to help envision their ideal kitchen” for this home in Vail, Colorado, says kitchen designer Carolyn Samelson. A placid waterfront location in the quaint ski town instantly qualified the house as magical, but it was up to Samelson and her design teammates, architect Beth Levine and interior designers Jim Powell and Suzie Page, to integrate contemporary and cottage style features.

“The owners wanted the look to be clean and simple to set off antique and retro modern elements,” Powell says. But successfully merging disparate characteristics to create cohesive style was only half the challenge. The 15×15 foot kitchen also needed to accommodate large scale entertaining for overnight guests filtering through in the mornings for coffee and a quick breakfast before hitting the slopes.



OPPOSITE TOP: At the sink, a high-arc faucet pairs with a secondary spout that delivers both filtered and hot water. **OPPOSITE BOTTOM:** Open shelves take advantage of a corner near the range, offering quick access to serving pieces and cookbooks. **THIS PHOTO:** Lighted glass-front cabinets make the dishware on display easy to locate. The slender Parsons-style table's cool marble top is ideal for rolling out dough.



LEFT: Beside the range, this pullout keeps clutter off the countertops with its dedicated spots for utensils, knives, and cooking ingredients all in a slim 10-inch-wide space. **BELOW LEFT:** Rectangular sconces with linen shades lend a modern look and cast a soft, filtered glow. **OPPOSITE:** Equipped with a coffee bar, microwave oven, and warming drawer, the serving center easily feeds a crowd as visitors pass through the kitchen on the way to the dining room.

The secret to hosting these crowds sits inside a deep wall of cabinetry. Behind sleek doors that open and slide back into the wall, a well stocked breakfast center waits to serve guests. The rich gray blue color was chosen so that the cabinets, which can be seen from the home's entryway, virtually disappear as the eye travels through the kitchen to the beautiful river view from the adjoining dining room.

Buttressing the serving wall, a U shape work core clad in white keeps the look light and airy, with two different but very simple cabinet door styles for subtle interest. "We really liked the simplicity of the white cabinets with the white quartz countertops, so we continued the quartz on the backsplash, even carrying the material to the ceiling behind the range," Powell says.

The blue French made range stands out against the white, exuding an abundance of retro modern charm. A similar hue appears on the long legs supporting a small island a nod to farmhouse table styling. "A traditional island would have introduced too much mass into the space," Powell says.

The island helps route breakfast crowds away from the work core. But it also offers a friendly spot to sit and chat with the cook especially as people leisurely stop by the breakfast center for coffee and a bite to eat. "It's really rewarding knowing that there is a place for everything and everyone in this kitchen whether it's just the couple or a crowd," Samelson says. [KBI](#)

RESOURCES BEGIN ON PAGE 138.





bright idea

Use contrasting cabinetry finishes to distinguish adjacent spaces. Stick to all cool or all warm tones for a unified look.

A full-page photograph of a bathroom. In the foreground, a white clawfoot bathtub sits on a dark floor. To its right is a small, modern stool with a white cushion and clear acrylic legs, holding a folded white towel and a small green object. The wall behind the tub is covered in a light-colored wallpaper with a repeating Greek key pattern. A chrome faucet and showerhead are mounted on the wall. Above the tub, a multi-tiered chandelier with glass shades hangs from the ceiling. To the left, a white toilet is partially visible. The overall aesthetic is elegant and classic.

DRAMATIC ARTS

Elegant marble, chic wallpaper,
and stylish accessories play starring
roles in this swanky bath.

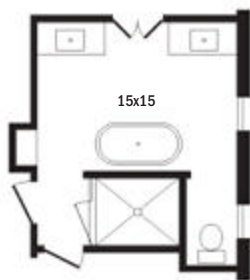
writer and field editor LISA MOWRY
photographer EMILY J. FOLLOWILL

OPPOSITE: “I love wallpaper in baths, because it acts like artwork for a space and gives it another dimension,” says interior designer Traci Rhoads, who enveloped this master bath with a Greek-key-inspired design. Ebony-stained wood floors provide dramatic contrast. **THIS PHOTO:** A telephone-style tub filler adds vintage allure.





MOVIE PRODUCTION DESIGNERS



might want to take notice of this high style bathroom, which has the sort of classic looks seen in a 1930s comedy or even a modern day thriller. “Creating a master bathroom with old Hollywood glamour was definitely my inspiration,” says Atlanta interior designer Traci Rhoads, who helped design this luxurious custom home for an Athens, Georgia, couple.

“The homeowners knew from the start that they wanted a freestanding tub to be the focal point,” Rhoads says. “We based the functionality of the rest of the bath around this feature.”

The sculptural lines of the tub hold their own against a backdrop of chic, gray tone wallpaper with a subtle pattern based on Greek key designs. An acrylic and chrome chandelier above the tub has simple lines so it won’t compete, yet it continues the glamorous vibe.

Identical vanities flank the doors to the master bedroom. The homeowners wanted symmetry and clean lines in the vanities, and they love that their placement makes it so they’re not visible from the bedroom. Beveled mirrors above each sink provide an upgrade from traditional flat glass. Plenty of storage in the vanity cabinets eliminates the need for medicine cabinets.



A spacious shower continues the look of simple elegance, with beveled edge tiles of Carrara marble and a thick marble bench. A band of black tile frames the shower's shiny nickel fixtures and adds just the right amount of detail to the enclosure. "Your environment plays a big part in how you feel," Rhoads says. "By surrounding the homeowners with floor to ceiling marble in the walk in shower, we wanted to evoke the feeling of a suite at one of the finest hotels."

The homeowners appreciate that the bathroom has a simply classic look one that's not tied down to any particular era. Hollywood glamour may be old, but it never goes out of style. **KBI**

RESOURCES BEGIN ON PAGE 138.

OPPOSITE: Vanities topped with Carrara marble and beveled-glass mirrors give the couple separate spaces. A view to the master bedroom shows the palette of gray and blue that carries throughout the house. **ABOVE LEFT:** Shapely sconces flank the vanity mirrors to provide task lighting for grooming. **ABOVE RIGHT:** Large-scale Carrara marble tiles line the shower, distinguished by a marble bench and polished-nickel fixtures.



bright idea

Choose durable vinyl wallpaper to minimize maintenance in a high moisture area like a bath.

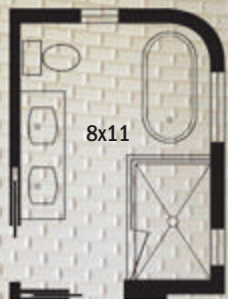
materials matter

Playing with textures and patterns in the bath makes a stunning design statement.



writer RENEE FREEMON MULVIHILL *photographer* WERNER SEGARRA *field editor* JESSICA BRINKERT HOLTAM

OPPOSITE: Textural pebble tiles contrast with a sleek handspray to blend rustic and modern design in this shower. **THIS PHOTO:** Designer Suzanne Biers created a spa-like guest bath with a palette of soothing, neutral hues. Varying surface materials adds interest and helps define bathing areas.



THIS PHOTO: Set opposite the room's entry, the shower is the first thing guests see when they enter the bath. A frameless enclosure retains an open, airy feel in the small bath, and a space-savvy teak patio stool enhances comfort.





WOOD-LOOK FLOOR Porcelain tile mimics the rustic texture and warmth of a real wood floor but stands up to water and humidity without extra maintenance. Designer Suzanne Biers chose long tiles for a more authentic look and opted for a caramel hue that warms up the room. Choose tiles with subtle shade variations to realistically imitate the beauty of wood.



PETITE SUBWAY TILES Diminutive 1×2 inch tiles cover the main bath walls and outline the shower. Their small size provides extra texture thanks to additional grout lines plus, they made it easier to cover a curved wall by the tub. “It’s a cross between traditional and contemporary,” Biers says. Beveled edges add unexpected dimension, turning the interest factor up a notch.



PEBBLE MOSAICS “I wanted it to be an earthy and organic spa like space, and I thought, *What better way to convey the organic look than with real pebble or rock?*” Biers says. She selected mesh mounted pebble tiles that bring texture to the shower walls and add traction underfoot. Plus, they give bathers the feeling of showering alfresco.



MATTE METALS The bath fixtures' subdued satin nickel finish offers a softer look than polished chrome, complementing the room's soothing, muted tones. Bonus: The durable matte finish hides smudges and water spots and is easy to clean. Sticking to one finish for all fixtures, from the faucets to the cabinetry hardware, helps tie the room together.



FROSTED GLASS Biers often installs sconces at vanities to provide flattering light for applying makeup, but there wasn't enough space in this small bath. Instead, she incorporated lighting into the edges of the vanity mirrors, behind frosted glass that provides another layer of texture. "When you turn the light on, those mirrors are lit all the way around," Biers says.

COOL CONCRETE Smooth and streamlined, the vanity's concrete countertop continues the room's focus on earthy colors and materials but provides visual relief from the surrounding textural surfaces. Concrete plays nice with other materials, and it complements both the modern and traditional design elements used to create the space.



THIS PHOTO: A floating double vanity made of cerused white oak shows off distinctive graining that adds to the room's rustic appeal. Small-scale subway tiles extend to the ceiling, helping to visually expand the space.

THIS PHOTO: The vanity counter's 5-inch thickness is a bit of sleight of hand that helps to visually lower the nearly 12-foot ceiling and cozy up the space. **OPPOSITE:** Devoid of extraneous detail, a frameless mirror seems to float over the vanity, complementing the streamlined silhouette of polished-chrome plumbing fixtures.





naturally speaking

HONEST MATERIALS ESTABLISH AN EARTHY, ORGANIC VIBE IN THIS STYLISH SEATTLE-AREA RETREAT.

writer MARA BOO *photographer* JOHN GRANEN *field editor* LINDA HUMPHREY



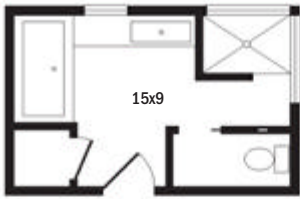
bright idea

Cut back on scrubbing with a doorless walk in shower. The lack of glass eases maintenance.



DOORLESS SHOWER DESIGNS

Say good-bye to curtains and glass doors. An open shower makes a statement, and this gallery shows you how to pull it off.
BHG.com/Doorless



W

ith three rough-and-tumble boys under the age of 6, Nicole Bavo and Kyle Meidell put an adults-only master bath at the top of their must-have list for

their new home in Bainbridge Island, Washington. “The house we moved from had a single, small bathroom,” Nicole says. “Let’s just say it was very tight.”

Greater square footage wasn’t their only goal—they also craved a cozy feel. To satisfy those twin objectives, architects Devin Johnson and Mike Rausch conceived a floor plan that dedicates zones to bathing, showering, and sink-oriented activities, and includes an enclosed commode. Then they worked with the couple to devise a restful color palette of blues, grays, and greens—lightened ever so slightly by white—to unify the space. “Nicole and Kyle weren’t afraid of color, which really helped create the warm, intimate feeling they were after,” Rausch says.

Infusing subtle excitement is a carefully limited mix of materials, each honoring the color scheme as it contributes its own unique texture. Glass tiles in several soothing hues shimmer as they climb shower walls and surround the tub. Hand-poured concrete—at once sleek yet organic—lines the floor, composes the extra-thick countertop, and forms an integrated trough-style sink. Meanwhile, the ridged-veneer vanity ripples in contrast, a surprising counterpoint to the room’s smoother elements.

Just as surprising is Nicole’s love for the walk-in shower—now the entire family’s favorite feature. “It’s turned out to be a wonderful place to bathe the boys. I can march them all in, let them splash and play, hose them off, and never even get wet. It’s not at all what I had planned, but a definite bonus!” Surprising, indeed. **KBI**

RESOURCES BEGIN ON PAGE 138.

OPPOSITE: A towel heater marks the entrance to the walk-in shower, letting homeowners Nicole Bavo and Kyle Meidell grab a warm towel without stepping foot out of the shower. **ABOVE RIGHT:** Unable to find sheets of glass tiles in exactly the color mix she wanted, Nicole painstakingly cut individual tiles out of single-tone sheets to create her own mosaic, set subway-tile-style. “It took about eight hours and more than a few X-Acto knife blades,” she says. **RIGHT:** Because Nicole is 5 feet tall while Kyle is more than 6 feet, an adjustable-height showerhead was a must.



A still life photograph featuring a vase of yellow flowers, a silver vase, and bread on a marble table. The scene is set on a dark, polished marble surface. In the foreground, a white plate holds two pieces of golden-brown bread. Behind the plate, a tall, clear glass vase with a silver, textured band around its middle holds a bouquet of yellow flowers. To the right of the glass vase is a silver, ornate vase. In the background, a window with white curtains is visible, and a wooden window frame is seen on the right side.

desert oasis

BEHIND AN ARIZONA
HOME'S RUGGED
EXTERIOR, A LUXURY
BATH AWAITS.

writer MERVYN KAUFMAN
photographer LAURA MOSS
field editor ANNA MOLVIK

OPPOSITE: Silver accessories highlight the veining in the black polished-marble countertops. **THIS PHOTO:** A Murano-inspired chandelier with chrome accents and candelabra bulbs lights the soaking tub, a must-have for homeowner and builder Joe McHallam. Pleated draperies further set off this side of the bath.



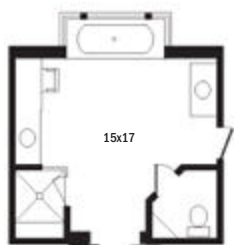


A book can't always be judged by its cover, nor a home by its exterior.

Looks are often deceiving, and Joe McHallam's 5,000 square foot Arizona desert retreat is proof. Joe, who built the home with guidance from architect Ron Robinette, calls it "a rustic and refined ranch" — there's an interesting mix of rustic materials on the outside, very refined materials on the inside." That refinement is most evident in the master bath Joe shares with his wife.

In contrast to the rustic materials — natural stone veneer, colored stucco, rough sawn timbers, and iron hardware — that form the facade of the sprawling house, the master bath is enriched with limestone, marble, porcelain, fine woods, and refined metal finishes. Joe designed the custom cabinetry and chose the finishes and paint tones. With a few exceptions, including his own richly colored vanity, the colors throughout are variations on off white. It's a bathroom designed to embrace the desert sun and the primal landscape beyond the windows. It's also a space designed so that Joe and his wife can use it simultaneously. Their separate vanities are on opposite walls; the tub is at one end, the stall shower at the other. And the toilet has its own compartment, with a door for privacy.

Despite the bath's location in the heart of the master suite, the McHallams' two school age daughters visit regularly. From the huge whirlpool tub they can watch their favorite shows on the TV concealed behind Mom's vanity mirror. And they can walk barefoot across the room's honed limestone flooring without risking a chill; it's heated from below. The bath may look the part of a five star retreat, but it's every bit a family comfort zone. **KBI** RESOURCES BEGIN ON PAGE 138.



ABOVE: The limestone-clad shower stall can become a steam shower when the glass transom is shut. **RIGHT:** Simple undermount sinks keep the focus on the beautiful stone countertops and polished-nickel faucets. **FAR RIGHT:** In Joe's grooming area, mahogany cabinetry was brushed with a grain-enhancing light stain. At 40 inches, his vanity is a half-foot taller than his wife's. **OPPOSITE:** Joe's wife's vanity extends into a dressing table for applying makeup.





bright idea

Customize a shared bath by setting each vanity at the right height for its primary user.

resources

Many of the products in our featured kitchens and baths are available for purchase and are listed here.

[T] TO THE TRADE ONLY These items or services are not available to the general public. Contact a design professional for help.

[P] PAINT COLOR Because of the magazine printing process, paint colors depicted on our pages may vary slightly from manufacturers' colors. Use paint color names or numbers, when provided, as a starting point. To get the exact color you see in the magazine, take the page to a paint retailer for matching.



11-13 WHAT'S NEW

Cabinetry—Wilson Woodworks; 801/368-6953. **Backsplash tile** Capri in Ice—Ann Sacks; 800/278-8453; annsacks.com.



21-23 10 THINGS TO LOVE

Architects—Pi Smith, AIA, John Vansant, AIA, Stephen Branchflower, Jason Gaffis, Smith & Vansant Architects PC; 802/649-5515; smithandvansant.com. **Interior design**—Denise Welch-May, DPF Design; 802/295-5064; dpfdesign.com. **General contractor**—Chip Odell, Odell Construction; 802/785-2400; odellconstructionvt.com. **Range**—Wolf Appliance, Inc.; 800/332-9513; subzero-wolf.com. **Refrigerator**—Sub-Zero, Inc.; 800/222-7820; subzero.com. **Dishwasher**—Bosch; 800/944-2904; boschappliances.com. **Cabinetry custom**—Brian Ilsley Cabinetry; 802/785-4206. **Cabinetry hardware: kitchen handles**—Rejuvenation; 888/401-1900; rejuvenation.com, and **pantry knobs, handles**—Restoration Hardware; 800/910-9836; restorationhardware.com. **Cabinetry paint custom; dining chairs custom**—DPF Design; 802/295-5064; dpfdesign.com. **Backsplash tile** Fire and Earth—Ann Sacks; 800/278-8453; annsacks.com. **Countertops: island teak, perimeter slate, pantry** Danby marble—check with local suppliers. **Sinks: prep sink**—Blanco America, Inc.; 800/451-5782; blancoamerica.com, and **pantry**—Whitehaus Collection; 800/527-6690; whitehauscollection.com. **Faucets: main sink, prep sink** Country pullout in Tuscan Brass—Rohl; 800/777-9762; rohlhome.com. **Lighting: island** Breakfast Bell Shade—Solaria; 404/508-1987; solarialighting.com. **Floor tile** Lucca

Tuscan Villa handmade—Pave, Tile, Wood & Stone, Inc.; 413/247-6087; pavetile.com. **Floor runner**—Dash & Albert Rug Co.; 800/658-5035; dashandalbert.com. **Paint: kitchen walls custom; beaded-board walls** Dark Beige; **pantry cabinetry** Papaya—Benjamin Moore; 888/236-6667; benjaminmoore.com [P]. **Windows**—Marvin Windows and Doors; 888/537-8268; marvin.com. **Roman shade fabric**—Stroheim & Romann; 800/974-8444; stroheim.com [T]. **Dining table custom**—Chip Odell, Odell Construction; 802/785-2400; odellconstructionvt.com. **Barstools** backless—Pottery Barn; 800/922-5507; potterybarn.com (product line varies).



34-35 GET THIS LOOK

Kitchen designer—Cheryl Kees Clendenon, In Detail Kitchen & Bath, NKBA, NARI; 850/437-0636; indetailinteriors.com. **Builder**—Miller Construction; 251/540-7326. **Range**—Jenn-Air; 800/688-1100; jennair.com. **Refrigerator**—KitchenAid; 800/422-1230; kitchenaid.com. **Cabinetry design, flooring** rectified distressed wood-look porcelain; **barstools**—In Detail Kitchen & Bath, NKBA, NARI; 850/437-0636; indetailinteriors.com. **Cabinetry fabrication**—Miller Construction; 251/540-7326. **Cabinetry knobs**—Emtek Products, Inc.; 800/356-2741; emtekproducts.com. **Backsplash tile** Silhouette mosaic #XCM212—Hirsch Glass Corp.; 732/329-8988; hirschglasscorp.com. **Countertops: perimeter, island** Hanstone Quartz in Specchio White—Hanwha L & C; 888/426-9421; hanwhasurfaces.com. **Paint: walls** Northern Cliffs; **ceiling** Rodeo; **cabinetry, wall trim** White Wisp; **island cabinetry** Seaside Resort—Benjamin Moore; 888/236-6667; benjaminmoore.com [P]. **Sinks: perimeter** Silgranit in White; **island** Silgranit II in Anthracite—Blanco America, Inc.; 800/451-5782; blancoamerica.com. **Faucets** Talis S semiarc—Hansgrohe; 800/334-0455; hansgrohe-usa.com. **Pendant lights over island** St. Croix clear—Jamie Young; 866/295-2677; jamieryoung.com.



38-39 SMALL BATH

Architect—Stephen Herlong, AIA, Herlong & Assoc.; 843/883-9190; herlongarchitects.com. **Interior architecture**—Layne Nelson, Elizabeth Jakubowski, and **interior design**—Theresa Bishopp, Heather Allison, Herlong & Assoc.; 843/883-9190; herlongarchitects.com. **Sink, toilet**—Kohler Co.; 800/456-4537; us.kohler.com. **Faucet**—Rohl; 800/777-9762; rohlhome.com. **Vanity**—William C. Pritchard Co., Inc.; 843/889-1313; williamcpritchard.com. **Vanity counter** Crema Marfil marble, honed—check with local suppliers. **Sconces**—Circa Lighting; 877/762-2323; circalighting.com. **Shower door** custom—check with local suppliers. **Mirror** custom—Haven's Fine Framing; 843/881-1543; havensfineframing.com.



40-43 SMALL KITCHEN

Interior design—Beverly Baribault, Beverly Baribault Design Group; 404/731-8476; bbaribault.com. **Wall ovens, cooktop, refrigerator**—GE Appliances; 800/626-2000; geappliances.com. **Cabinetry**—Imperial Woodworking, LLC; 770/773-9231; think-imperial.com. **Cabinetry handles** custom, **countertops** Black Pearl granite, leathered—Beverly Baribault Design Group; 404/731-8476; bbaribault.com. **Backsplash** Madera in White, honed—Traditions in Tile; 800/906-5523; traditionsintile.com. **Sink**—Blanco America, Inc.; 800/451-5782; blancoamerica.com. **Faucet**—Danze; 877/530-3344; danze.com. **Pendants** Ennis Large Pendant #46599—Arteriors Home; 877/488-8866; arteriorshome.com. **Barstools**—homeowners' collection.



60-65 COLONIAL REVIVAL

Designer-builder—Steve Berg, Berg Design + Build; 804/353-3444; bergbuilding.com. **Cabinetmaker**—O.B. Yancey III, Woodwrights Cooperative; 804/358-4800. **Range**—Wolf Appliance, Inc.; 800/332-9513; subzero-wolf.com. **Refrigerator, microwave** Monogram—GE Appliances; 800/626-2000; geappliances.com. **Dishwashers** Elite—Sears Kenmore; 888/536-6673; kenmore.com. **Sinks** Shaws Original Apron Front—Rohl; 800/777-9762; rohlhome.com. **Pendant lights above island**—Pottery Barn; 800/922-5507; potterybarn.com (product line varies), and **above sink**—Restoration Hardware; 800/910-9836; restorationhardware.com. **Breakfast table, kitchen stools**—Arhaus; 866/427-4287; arhaus.com. **Clock on brick wall**—One Kings Lane; 855/746-7655; onekingslane.com.



66-71 GOOD GALLEY

Builder/contractor, interior designer—Elysia Viets, EV Design, LLC; 303/518-8028. **Range, vent hood, refrigerator, dishwasher, microwave** Professional Series—Viking Range Corp.; 888/845-4641; vikingrange.com. **Cabinetry**—Kabi; 303/862-3563; kabi.net. **Countertops** Organic White—CaesarStone US; 877/978-2789; caesarstoneus.com. **Sink, faucets**—Blanco America, Inc.; 800/451-5782; blancoamerica.com. **Lighting**—Fusion Light and Design; 303/777-4721; fusionlightanddesign.com.



72-77 BLUE CHEER

Kitchen design—TerraCotta Properties; 404/377-0906; terracottaproperties.com. **Architecture**—Ili Hidalgo-Nilsson, Luly Melarti, TerraCotta Properties; 404/377-0906; terracottaproperties.com. **Interior designer**—Ili Hidalgo-Nilsson, TerraCotta Properties; 404/377-0906; terracottaproperties.com. **Builder**—Maurie Hullender, TerraCotta Properties; 404/377-0906; terracottaproperties.com. **Refrigerator, wine cooler**—Sub-Zero, Inc.; 800/222-7820; subzero.com. **Vent hood** custom—Vent-A-Hood Co.; 800/331-2492; ventahood.com. **Range, oven, microwave**—Wolf Appliance, Inc.; 800/332-9513; subzero-wolf.com. **Dishwasher**—Miele, Inc.; 800/463-0260; mieleusa.com. **Cabinetry** custom—Greenwalt & Sons; 770/222-4430; greenwaltandsons.com. **Cabinetry hardware**—Restoration Hardware; 800/910-9836; restorationhardware.com. **Backsplash, countertop**—DuPont Zodiaq Quartz Surfaces; 877/229-3935; zodiaq.com. **Sink**—Kohler Co.; 800/456-4537; us.kohler.com. **Faucet**—Danze; 877/530-3344; danze.com. **Lighting: island pendants** Hood—Rejuvenation; 888/401-1900; rejuvenation.com, and **dining ceiling light** Meurice Rectangle Chandelier—Jonathan Adler; 800/963-0891; jonathanadler.com. **Dining chairs** wooden Josephine; **kitchen stools** Riviera Counter Stool—Serena & Lily; 866/597-2742; serenaandlily.com. **Console**—Bungalow 5; 212/947-1500; bungalow5.com.

resources



78-83 SIMPLY SERENE

Kitchen design Keystone Kitchen and Bath; 828/743 6895; keystonekb.com. **Contractor** Bill Young, Mill Creek Development; 828/200 4818. **Range** DF486G LP, **vent hood blower** PL462212 Wolf Appliance, Inc.; 800/332 9513; subzero.wolf.com. **Vent hood mantel** custom check with local craftspeople. **Refrigerator** BI 48S/O, **refrigerator drawers** 700BR Sub Zero, Inc.; 800/222 7820; subzero.com. **Cabinetry** maple with Regent door, inset; **hinge finial** oil rubbed bronze Crystal Cabinet Works, Inc.; 800/347 5045; crystalcabinets.com. **Cabinetry hardware** custom Masterpiece Lighting and Architectural Hardware; 404/897 9977; masterpiecelighting.com. **Countertops: island, perimeter** Rainforest Brown marble check with local suppliers. **Sink** Orca ORX110 Franke Kitchen Systems Division; 800/626 5771; frankeksd.com. **Faucet** Grohe America, Inc.; 800/201 3407; groheamerica.com. **Flooring** heart pine Mill Creek Development; 828/200 4818. **Sconces** Large Cardiff Gregorius/Pineo; 310/204 0400; gregoriuspineo.com. **Paint** Stone White #11, Van Dyke Brown Farrow & Ball; 888/511 1121; farrowball.com [P]. **Glass vases, brush holder** Dutchman's Casual Living; 844/388 2466; dutchmansdesigns.com. **Green vase** Lowe's; lowes.com. **Canisters** World Market; 800/267 8758; worldmarket.com (product line varies). **Soup pot with cover** Calphalon Corp.; 800/809 7267; calphalon.com. **Woven tray** Pottery Barn; 800/922 5507; potterybarn.com (product line varies). **Tea towels, yellow bowl** Target Stores; 800/800 8800 for a retail store near you; target.com (product line varies). **Fruited branches, flowers** Little Flower Shoppe; 828/526 3650; thelittleflowershoppe.biz.



84-89 FRESH APPROACH

Kitchen designer Matthew Rao, Rao Design Studio; 404/815 5655; raodesignstudio.com. **Interior designer** Kenneth Knight, Kenneth Knight Interior Design; 404/272 4567. **Contractor** LaMar Owens, Rao Design Studio; 404/815 5655; raodesignstudio.com. **Cooktop, vent hood, refrigerator, freezer** Gaggenau; 800/828 9165; gaggenau.usa.com. **Ovens, dishwasher, coffee machine** Miele, Inc.; 800/463 0260; mieleusa.com. **Cabinetry** Beaux Arts; **countertops: perimeter** flamed granite, **island** walnut, Carrara marble SieMatic; 215/604 1350; siematic.com. **Lighting: island chandelier** Alpine 7118 Hudson Valley Lighting, Inc.; 800/814 3993; hudsonvalleylighting.com. **Banquette** custom Kenneth Knight, Kenneth Knight Interior Design; 404/272 4567.



90-95 PERFECT FIT

Builder Kristina Ferrigan, Normandy Remodeling; 630/455 5600; normandyremodeling.com. **Range** dual fuel DF364G Wolf Appliance, Inc.; 800/332 9513; subzero.wolf.com. **Oven** steam DG4084; **microwave/speed oven** H 4044 BM, **warming drawer, dishwasher** Miele, Inc.; 800/463 0260; mieleusa.com. **Refrigerator** built in with French doors BI 36UFD/S/TH Sub Zero, Inc.; 800/222 7820; subzero.com. **Coffeemaker** Technivorm Moccamaster with glass carafe Williams Sonoma; 800/541 2233; williams-sonoma.com. **Cabinetry** Plain & Fancy Cabinetry; 800/447 9006; plainfancycabinetry.com. **Cabinetry hardware** Gilmore pull, crystal knob; **pantry hardware** Aubrey pull in Polished Chrome Restoration Hardware; 800/910 9836; restorationhardware.com. **Backsplash** Barbara

Barry Frame Collection Ann Sacks; 800/278 8453; annsacks.com. **Countertops** Calacatta Gold marble Global Marble and Granite Importer; 630/458 0900; globalmarbleil.com. **Sink: kitchen** Shaw Fireclay Apron Farm sink in White RC3018 Rohl; 800/777 9762; rohlhome.com. **Faucets: kitchen sink** Michael S. Smith Town Collection bridge faucet with cross handles and side spray Kallista; 888/452 5547; kallista.com, and **drinking water** Exubera 3 way bar faucet for chilled, sparkling, or ambient water Everpure; 855/790 5318; everpure.com. **Lighting: over table** Thomas O'Brien Reed Hanging Light in polished silver with drum shade TOB5011 Circa Lighting; 877/762 2323; circalighting.com, and **over sink** Fresnel Prismatic flush mount in Polished Chrome Restoration Hardware; 800/910 9836; restorationhardware.com. **Paint: walls, island** Shale; **cabinetry, ceiling, trim** Marscarpone Benjamin Moore; 888/236 6667; benjaminmoore.com [P]. **Fabric: shades, pillows** Evelynne Lemongrass, **roll pillows, side pillow** Strands Citrus Calico Corners; 800/213 6366; calicocorners.com. **Kitchen table** Desiree Trestle Monastery in Weathered Grey Oak Malvini; malvini.com. **Kitchen chairs: Captiva Seaside side chairs** in White, **woven Parsons dining chair, table runner** Chilewich Basketweave in Citron, **teapot, covered sugar bowl** Barbara Eigen Cozy in Pastel Yellow Crate & Barrel; 800/967 6696; crateandbarrel.com (product line varies). **Rocking birds** large in Natural, small in White, **napkin** chevron stripe in Yellow and White West Elm; 866/428 6468; westelm.com (product line varies). **Wall art** Original by Deborah Niles homeowner's collection. **Kitchen towel** yellow Foodstuffs; 847/835 5105; foodstuffs.com. **Canister** in Charcoal Grey Hobby Lobby; 800/323 9204; hobbylobby.com. **Stockpot** Bistro Collection Wolfgang Puck; wolfgangpuck.com. **Wicker basket** Southern Living Seagrass Condiment Caddy in Natural Ballard Designs; 800/536 7551; ballarddesigns.com (product line varies). **Covered cake plate, ceramic pots on shelves and beside sink** vintage check with local antiques dealers.



96-101 LAYOUT LESSONS

General contractor—Dennis Zattera, Trinity Construction Services, LLC; 952/297-5000; trinitymn.net. **Range top, ovens, refrigerator, microwave drawer**—Thermador; 800/735-4328; thermador.com. **Vent hood**—Zephyr Ventilation; 888/880-8368; zephyronline.com. **Beverage refrigerator**—Electrolux Home Products; 877/435-3287; electroluxappliances.com. **Dishwasher**—KitchenAid; 800/422-1230; kitchenaid.com. **Cabinetry** Inovae with Legacy doors in Mocha Lite stain—Plato Woodwork, Inc.; 800/328-5924; platooodwork.com. **Drawer pulls** Contemporary Metal Handle Pull—Richelieu; US: 800/619-5446; Canada: 800/361-6000; richelieu.com. **Countertop** Fantasy Brown quartzite—Universal Stone, Inc.; 952/746-4690; universalstone-inc.com. **Backsplash** Vogue Glass in Puff—Casa Roma; casaroma.ca. **Sinks: main**—Kraus; 800/775-0703; kraususa.com, and **prep**—American Standard; 800/899-2614; americanstandard-us.com. **Faucets** LadyLux Collection—Grohe America, Inc.; 800/201-3407; groheamerica.com. **Lighting: pendants** Clarity; **undercabinet** InvisiLED Tape Light—WAC Lighting; 800/526-2588; wacighting.com. **Flooring** white oak—T & G Hardwood; 651/633-3343; tghardwood.com. **Counter stools** Vapor—CB2; 800/606-6252; cb2.com.



102-107 SWEDE SPOT

Design-build team—TerraCotta Properties: Ili Hidalgo-Nilsson, NCARB Architect, NCIDQ designer, design-build manager, and Courtney Davis, designer; 404/377-0906; terracottaproperties.com. **Subcontractor**—Brian Matura, The Loring Group; 404/569-2267; theloringgroup.com. **Ovens** convection single ovens; **cooktop** five-burner induction; **dishwasher** integrated EIDW6405HT—

Electrolux Home Products; 877/435-3287; electroluxappliances.com. **Refrigerator** integrated E30EW75GPS—Sub-Zero, Inc.; 800/222-7820; subzero.com. **Icemaker** integrated BI2115, **trash compactor** BI2115—KitchenAid; 800/422-1230; kitchenaid.com. **Wine cooler** integrated 1075WC—U-Line Corp.; 800/779-2547; u-line.com. **Microwave** freestanding JES1142SJ—GE Appliances; 800/626-2000; geappliances.com. **Vent hood** custom—Vent-A-Hood Co.; 800/331-2492; ventahood.com. **Cabinetry** custom in lacquer finish—Greenwalt & Sons; 404/271-5179; greenwaltandsons.com. **Cabinetry hardware: kitchen** Vinci in White Bronze—Schaub and Co.; 616/871-0040; schaubandcompany.com, and **bar** Round Glass Knobs—Restoration Hardware; 800/910-9836; restorationhardware.com. **Backsplash: kitchen, countertops: perimeter cabinetry, bar** Calacatta Gold marble; **island** Dark Emperador marble—Intown Design, Inc.; 404/812-3820; intowndesigninc.com. **Faucets: main sink** Meridian Series 440558, **prep sink** Meridian Series 440955, **pot filler** Cantata Collection, **soap dispenser** Meridian Series 440559—Blanco America, Inc.; 800/451-5782; blancoamerica.com. **Flooring** Red Oak—check with local suppliers. **Flooring stain** Provincial in semigloss—Minwax; 800/523-9299; minwax.com. **Floor runner** Panthea in Blue—Horchow Home Catalog; 800/456-7000; horchow.com. **Sconces** TT single wall light—Circa Lighting; 877/762-2323; circalighting.com. **Paint: walls** Ash in Velvet, **island cabinetry** Graphite—Restoration Hardware; 800/910-9836; restorationhardware.com, and **ceiling, trim** Extra White SW7006 in high gloss; **kitchen perimeter cabinetry** Knitting Needles SW7672; **bar cabinetry** Sealskin SW7675—The Sherwin-Williams Co.; 800/474-3794; sherwin-williams.com [P]. **Cutting board, wicker bar tray**—At Home; 205/879-3510; athome-furnishings.com.



108-113 ITALIAN ROMANCE

General contractor—Randy Raugh, Bergquist Builders; 415/238-6549; bergquistbuilders.com. **Interior design**—Erin McGilvery, Matthew Bergman, Folio

Design; 858/350-5995; foliodesign.com. **Range** Majestic—Ilve; ilve.com. **Vent hood: shelf** Toulouse in Limestone Grey, **stack** Provence in Pewter—Francois & Co.; 888/313-3237; francoisandco.com. **Refrigerator** 736TCI with custom wood panels—Sub-Zero, Inc.; 800/222-7820; subzero.com. **Cabinetry, island** Amalfi G6, Firenze G6, **diamond doors** custom; **cabinetry paint** Cameo Glazed Finish, **island paint** Distressed Light Oak, **fireplace cabinetry** custom in Light Oak; **pullout baskets**—Downsview Kitchens; 905/677-9354; downsviewkitchens.com, and Folio Design; 858/350-5995; foliodesign.com. **Cabinetry hardware** Devon knob in Pewter Antique, Tuscan T-handle, pull in Pewter Antique—Top Knobs USA, Inc.; 800/499-9095; topknobsusa.com. **Countertops: perimeter, island** Calacatta Crema marble—Integrated Resources Group; 888/263-1543; marblecompany.com. **Backsplash** Vintners Reserve in Zinc, **arch** Artisan Series Herringbone 1×2 Arch in Platinum—Sonoma Tilemakers, Inc.; 707/837-8177; sonomatilemakers.com. **Sink** Quatro Alcove fireclay—Whitehaus Collection; 800/527-6690; whitehauscollection.com. **Faucet** Towson Collection in Satin Nickel—Waterstone; 888/304-0660; waterstoneco.com. **Floors** Dalle de France Marle limestone—Exquisite Surfaces; 818/767-2700; xsurfaces.com. **Pendants** Double Sloane Shop Light—Circa Lighting; 877/762-2323; circalighting.com. **Ceiling beams** Antique Wood Box Beams—Faux Wood Beams; 800/651-4223; fauxwoodbeams.com. **Fireplace mantel** Provence—California Cast Stone; 805/975-7750; caststonemasonry.com. **Fireplace gas insert** I-Series—Montigo; montigo.com. **Armoire** 17th century Tuscan pine cabinet; **dining table** 18th century “fratina” Tuscan walnut; **pendant over dining table** vintage terra-cotta wine funnel light—Fatto a Mano; 415/525-4348; fattoamanosf.com. **Dining chairs** Aden curved leg side chair—Palecek; 800/274-7730; palecek.com [T]. **Sofa chairs** Mayes 3-way Lounger 3216 in leather—Bradington Young; 704/435-5881; bradington-young.com. **Stools** Marguerite Counter Stool—Ballard Designs; 800/536-7551; ballarddesigns.com (product line varies). **Butcher block, plaid dish towels, cake stand with lemons**—Summer House; 415/383-6695. **Canisters**—Williams-Sonoma; 800/541-2233; williams-sonoma.com. **Fabrics: pillows** Pattern #31360 in color #616; **window seat** Pattern #27952 in color #11—Kravet; 800/645-9068; kravet.com.



114-119 CROWD PLEASER

Kitchen designer—Carolyn Samelson, CKD, ASID, WMOBS; 970/390-9155; wmobs.com. **Architect**—Beth Levine, Beth Levine Architect, Inc.; 970/376-4736; bethlevinearchitect.com. **Builder**—Kevin O'Donnell, Beck Building Co.; 970/949-1800; beckbuilds.com. **Interior designers**—Jim Powell, J. Powell and Associates, Inc.; 970/748-0383; jpowell.net, and Suzy Page, Twenty Three 07; 512/477-2307; twentythree07.com. **Range** CornuFé 110 in Provence Blue—La Cornue; 800/457-1356; lacornueusa.com. **Vent hood** KD122250.OE-UL—Küppersbusch; kuppertsbuschusa.com. **Refrigerator** 736 TCI—Sub-Zero, Inc.; 800/222-7820; subzero.com. **Dishwasher** SHV68E13UC—Bosch; 800/944-2904; boschappliances.com. **Cabinetry** custom—William Ohs, Inc.; 303/371-6550; wmohs.com. **Backsplash, countertops** CaesarStone in White—CaesarStone US; 877/978-2789; caesarstoneus.com. **Sink** stainless—Franke Kitchen Systems Division; 800/626-5771; frankeksd.com. **Faucet, water dispenser** Tara Ultra—Dornbracht USA, Inc.; 800/774-1181; dornbracht.com. **Flooring** white oak—check with local suppliers. **Sconces** Estudio Estiluz Miris Vertical Wall Sconce A-2811—Y Lighting; 866/428-9289; ylighting.com. **Kitchen table** Parsons in custom finish, **marble top** Vernatino—Room & Board; 800/486-6554; roomandboard.com. **Counter stools** Bertoia Barstool—Knoll; 800/343-5665; knoll.com.



120-123 DRAMATIC ARTS

Architect—Timothy S. Adams, T.S. Adams Studio, Architects, Inc.; 404/262-3499; tsadamsstudio.com. **Interior design**—Traci Rhoads, Allied ASID, Traci Rhoads Interiors; 404/307-1235; trinteriors.net. **Tub, bath and shower fixtures, sinks, faucets**—Kohler Co.; 800/456-4537; us.kohler.com. **Cabinetry**—Cabinet Resources; 770/935-8810; cabinetresources.com. **Cabinetry hardware**—Restoration Hardware; 800/910-9836; restorationhardware.com. **Countertop, shower tiles** Carrara marble—Ceramic Technics LTD; 770/740-0050; ceramictechnics.com. **Lighting: over tub**—Circa Lighting; 877/762-2323; circa Lighting.com, and **vanity sconces**—Waterworks; 800/998-2284; waterworks.com. **Wallpaper**—Jonathan Adler; 800/963-0891; jonathanadler.com. **Mirrors**—Mirror Image Home; 323/869-1700; mirrorimagehome.com. **Stool** in Lucite—Global Views; 888/956-0030; globalviews.com.



124-129 MATERIALS MATTER

Interior designer—Suzanne Biers Harrington, The Suzanne Biers Company; 602/999-1550; sbiers.com. **Builder**—Dick Lloyd, Dick Lloyd Custom Homes, Inc.; 480/585-2466; dicklloydhomes.com. **Tub, tub faucet, sink faucet, vanity countertop, cabinetry hardware**—Clyde Hardware Co., Inc.; 602/264-2106; clydehardware.com. **Shower door glass, mirrors**—Cohaco Building Specialties; 623/247-5121; cohaco.com. **Shower wall tiles, wood-grain tiles, pebbles**—Daltile; 800/933-8453; daltile.com. **Cabinetry, window treatment, teak stool**—The Suzanne Biers Company; 602/999-1550; sbiers.com. **White tray**—West Elm; 866/428-6468; westelm.com (product line varies). **White vase, back scrubber**—HomeGoods; 800/614-4663; homegoods.com (product line varies). **Bubble bath, bath salts, bath milk, sponge**—Restoration Hardware; 800/910-9836; restorationhardware.com. **Shell starburst**—Z-Gallerie; 800/908-6748; zgallerie.com. **Shampoo, conditioner** Fekkai—Ultra Beauty; ultra.com.



130-133 NATURALLY SPEAKING

Architects Devin Johnson, Michael Rausch, Johnson Squared; 206/842 9993; johnsonssquared.com. **Tub** Andrea MTI; 800/783 8827; mtibaths.com. **Faucets:** tub Atrio Roman, **sink** Atrio widespread with lever handles Grohe America, Inc.; 800/201 3407; groheamerica.com. **Cabinetry** thermo structured surface TSS Collection Macassar, a textured Macassar Ebony veneer SALT International Corp.; 305/698 8889; saltintl.com. **Countertops** custom concrete with dual faucet integral sink, **tub surround** custom concrete Ryan McPhail, Fluid Concrete and Design Studio; 206/818 2996. **Lighting:** pendants Borrego in Smoke, **overhead** Caspian Grande in Smoke Tech Lighting, Inc.; 800/522 5315; techlighting.com. **Tile:** shower walls, **tub surround**, **walls** Moda Vetro glass mosaic in es01, es13, and es19, **shower floor** honed bluestone Pental Granite & Marble; 503/445 8600; pentalonline.com. **Flooring** poured concrete check with local suppliers. **Towel warmer** Jeeves Model D Amba Products; 404/350 9738; ambaproducts.com. **Scroll on wall** Chinese Glenn Richards; 206/287 1877; glennrichards.com.



134-137 DESERT OASIS

Architect Ron Robinette, AIA, Robinette Architects, Inc., LEED, USGBC; 520/323 3979; robinettearchitect.com. **Builder** Joe McHallam, The McHallam Company, LLC; 520/797 9988; themchallamco.com. **Tub** BainUltra; 800/463 2187; bainultra.com. **Tub filler** Sigma Faucet; 800/621 8383; sigmafaucet.com. **Sinks** Kohler Co.; 800/456 4537; us.kohler.com. **Faucets** Dornbracht USA, Inc.; 800/774 1181; dornbracht.com. **Vanities** Crown Point Cabinetry; 800/999 4994; crownpoint.com. **Countertops** Noir St. Laurent, **floor and shower tile** Parchment limestone The McHallam Company; 520/797 9988; themchallamco.com. **Lighting:** **sconces, his vanity** Ralph Lauren Home; 888/475 7674; ralphlaurenhome.com, and **sconces, her vanity** Porta Romana; 786/464 0992; portaromana.co.uk, and **ceiling fixture** Vaughan Lighting; 212/319 7070; vaughandesigns.com. **Mirror:** **her vanity** Séura; 920/857 9069; seura.com, and **his vanity, rug** homeowners' collection. **Urn beside tub** silver Paula Wertman Classic Design; 520/299 0032. **Vases by tub and vanities, jewelry box** West Elm; 866/428 6468; westelm.com (product line varies). **Brown urn, silver tray, round soap dishes, towels** Crate & Barrel; 800/967 6696; crateandbarrel.com (product line varies). **Candle** Anthropologie; 800/309 2500; anthropologie.com. **Shaving props** The Art of Shaving; 800/493 2212; theartofshaving.com.

that's clever!



Undercover Cart

This space-saving rolling cart offers an additional surface for meal prep but stealthily blends in with cabinetry when it's not in use. Its interior holds plenty of cookware and other kitchen essentials, while a bar mounted on the front keeps dish towels at the ready for cleanup duty.

**Better
Homes** gardenstore
and Gardens

exclusive | get it here first

Highly Fragrant Plants for Spring

ORDER TODAY:

1-800-420-2852

REFER TO CODE PAR01

ORDER ONLINE:

BHGGardenStore.com

A PINK LILAC THAT REBLOOMS!

For the first time ever, we offer this new addition to the Bloomerang® family of reblooming Lilacs. 'Pink Perfume' blooms heavily in May and, after a short rest, flowers again intermittently until fall. These charming and compact plants give a neat show of color for containers, pathways, and intimate spaces. Its upright, bushy form reaches just 4-5' tall. A Proven Winners® variety.

Ships in a 2 quart pot at the proper time for spring planting in your zone, weather permitting. Recommended for Zones 3-7 S&W. **Item Mo67629, \$24.95, or 3 for \$63 (save 15%), plus shipping.**



LARGE-FLOWERING LILY MIX

The showy, fragrant blooms of Orienpet Lilies are some of the grandest jewels of the summer garden. It's easy to enjoy the exquisite beauty and rich perfume of these hardy bulbs simply by planting them among perennials and shrubs. The Orienpet Lily Mix includes 8 varieties of top-quality Lilies (3 of each), 24 bulbs in total, in shades of red, white, pink, and yellow—all intensely fragrant and held on sturdy 3-5' stems. These blooms will make any border sparkle and any bouquet a success.

Your Lily bulbs will be shipped at the proper time for spring planting in your zone, weather permitting. Recommended for zones 5-8S/9W. **Item MM920613, \$39.00, plus shipping.**

Order early; quantities are limited and are reserved on a first-come, first-served basis.

"We saved enough energy to bring a new middle school off the drawing board."

Loudoun County Public Schools Superintendent Dr. Edgar B. Hatrick



NAME: Loudoun County Public Schools, Virginia

IMPROVING ENERGY PERFORMANCE BY: Earning EPA's ENERGY STAR® certification for 46 schools

SAVINGS: More than \$40 million, plus a nearly 360,000 metric ton greenhouse gas emission reduction

RESULTS: Energy savings equaled cost of building their newest middle school

When Loudoun County Public Schools partnered with ENERGY STAR, the idea was to cut energy costs so the savings could go to a better use. In nineteen years, their savings equaled the cost of building a new middle school. Today, that school is a reality. And the energy they're saving reduces greenhouse gas emissions that cause climate change. Put ENERGY STAR to work for you at energystar.gov.

